

Posterior Tibial Slope in Patients With Torn ACL Reconstruction Grafts Compared With Primary Tear or Native ACL

A Systematic Review and Meta-analysis

Robert S. Dean,^{*†} MD, Nicholas N. DePhillipo,^{†‡} PhD, ATC, OTC, and Robert F. LaPrade,^{†§} MD, PhD

Investigation performed at Twin Cities Orthopedics, Edina, Minnesota, USA

Background: Increased posterior tibial slope (PTS) is a risk factor for anterior cruciate ligament (ACL) rupture and failure of ACL reconstruction (ACLR) grafts.

Purpose: The purpose was to conduct a systematic review of literature on PTS measurements and to conduct a meta-analysis of comparable PTS measurements based on a patient's ACL status. It was hypothesized that patients with torn ACLR grafts would have significantly larger medial and lateral PTS compared with patients with native ACLs or those who underwent primary ACLR.

Study Design: Systematic review; Level of evidence, 4.

Methods: A systematic review was performed using PRISMA (Preferred Reporting Items for Systematic Reviews and Meta-Analyses) guidelines. Included were studies that reported medial and/or lateral PTS measurements, those that reported PTS measurements based on ACL status (ie, intact ACL, primary ACL tear, failed ipsilateral ACLR, or revision ACLR), and those that reported their specific PTS measurement technique. Average PTS measurements, measurement location (medial or lateral tibial plateau) and technique, imaging modality used, and ACL status were extracted from each study. Data were pooled using DerSimonian and Laird random-effects models, and results were compared using the Altman interaction test.

Results: The literature search identified 1705 studies, of which 82 (N = 12,971 patients) were included. There were 4028 patients in the intact ACL group (31%), 7405 in the primary ACLR group (57%), and 1538 in the failed ACLR group (12%). Measurements were obtained from lateral radiographs in 31 studies (38%), from magnetic resonance imaging in 47 studies (57%), and from computed tomography in 4 studies (5%). The failed ACLR group had a significantly larger lateral PTS (9.55°; 95% CI, 8.47°-10.63°) than either the primary ACL tear (7.13°; 95% CI, 6.58°-7.67°) or intact ACL (5.57°; 95% CI, 5.03°-6.11°) groups ($P < .001$ for both). The failed ACLR group also had a significantly larger medial PTS (9.05°; 95% CI, 7.80°-10.30°) than the primary (6.24°; 95% CI, 5.71°-6.78°) or intact ACL (6.28°; 95% CI, 5.21°-7.35°) groups ($P < .001$ for both).

Conclusion: Both lateral and medial PTS measurements were greater in patients who had failed previous ACLR than those with a primary ACL tear or an intact native ACL. The lateral PTS of patients with primary ACL tears was greater than those with an intact native ACL.

Keywords: ACL risk factor; anterior cruciate ligament; anterior cruciate ligament revision; posterior tibial slope

Posterior tibial slope (PTS) is an important radiographic measurement that is defined by the sagittal angulation of the tibial plateau relative to the tibial shaft.⁶⁸ Biomechanical data suggest that anatomic variations in PTS can significantly alter biomechanical knee stability; studies have reported a linear relationship between the PTS and the amount of tension placed on native cruciate ligaments and

reconstructed cruciate grafts.^{7,8,49,98} Previous case series have reported that patients with primary anterior cruciate ligament (ACL) tears have steeper PTS.^{58,104} Others have shown that patients with graft rupture after previous ACL reconstruction (ACLR) have greater PTS than those undergoing primary ACLR.^{72,86} To protect reconstruction grafts from variations in PTS, some authors advocate the use of slope reducing, anterior closing-wedge high tibial osteotomy.^{22,24,27}

Measurement strategies include a variety of imaging modalities, such as standard lateral radiographs, long-leg

The Orthopaedic Journal of Sports Medicine, 10(4), 23259671221079380
DOI: 10.1177/23259671221079380
© The Author(s) 2022

This open-access article is published and distributed under the Creative Commons Attribution - NonCommercial - No Derivatives License (<https://creativecommons.org/licenses/by-nc-nd/4.0/>), which permits the noncommercial use, distribution, and reproduction of the article in any medium, provided the original author and source are credited. You may not alter, transform, or build upon this article without the permission of the Author(s). For article reuse guidelines, please visit SAGE's website at <http://www.sagepub.com/journals-permissions>.

lateral radiographs, magnetic resonance imaging (MRI), and computed tomography (CT), in addition to several different techniques including utilization of the anatomic or mechanical axis or the anterior or posterior cortex.^{23,32,39,47,64,66,76,100} Previous reports have demonstrated that increases in PTS, by as little as 2°, places a clinically significant amount of increased strain on the ACL.¹⁸

Despite numerous case series and biomechanical studies that evaluated PTS in patients with ruptured ACLs and those undergoing revision or rerevision ACLR, there are few comprehensive reviews comparing the PTS of patients with ACL pathology. As such, the purpose of the current analysis was to conduct a systematic review of literature on PTS measurements and to conduct a meta-analysis of comparable PTS measurements based on patients' ACL status/integrity (intact ACL, primary ACL tear, failed ACLR). It was hypothesized that patients with torn ACLR grafts would have significantly larger medial and lateral PTS compared with patients with native ACLs or those with primary ACLRs.

METHODS

Article Identification and Selection

A systematic review was completed using the PRISMA (Preferred Reporting Items for Systematic Meta-Analyses) guidelines on the PTS of patients undergoing primary and revision ACLR; the query was performed in May 2021 (Figure 1). The specific search terms were “Tibial Slope” AND “ACL” OR “PTS” AND “ACL” OR “Tibial Slope” AND “Revision” OR “Anterior Cruciate Ligament” AND “Revision.” This systematic review was registered in May 2021 using the PROSPERO international prospective register of systematic reviews (registration No. CRD42021256743).

The inclusion criteria for studies in both the systematic review and meta-analysis consisted of the following: studies written in English, studies that reported either medial or lateral PTS, studies that reported PTS measurements based on the status of a patient's ACL (ie, intact ACL, primary ACL tear, failed ACL ipsilateral reconstruction, or revision ACLR), studies that reported their PTS measurement technique, and studies that were published during or after the year 2000. Measurements for the intact ACL group were obtained from patients who had non-ACL pathologies. These measurements were not obtained from the contralateral limb of patients with ACL tears. Exclusion criteria were ACL studies that did not include PTS

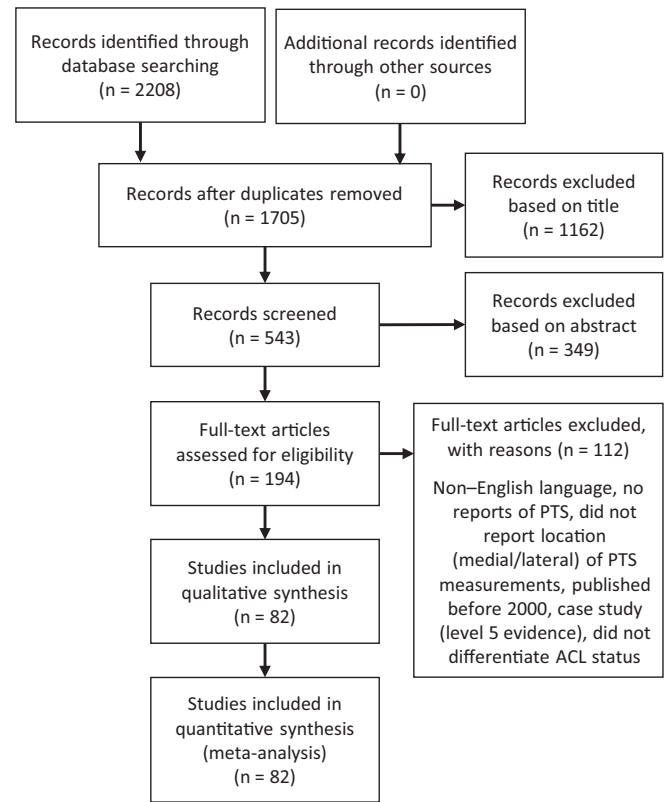


Figure 1. PRISMA flowchart demonstrating the article selection process. ACL, anterior cruciate ligament; PRISMA Preferred Reporting Items for Systematic Meta-Analyses; PTS, posterior tibial slope.

measurements; studies that failed to describe the ACL status; studies that failed to differentiate measurement location (medial vs lateral PTS) or technique of PTS measurement; studies that failed to report measures of variance (eg, standard deviation or confidence interval); case studies with level V evidence; any study published before the year 2000; studies that used or compared multiple measurement techniques; studies that included posterior cruciate ligament injuries; and biomechanical, in vitro, or animal model studies. Studies that included both revision and primary ACLRs in the same cohort were not included in the meta-analysis portion of the current study. Two investigators (R.S.D., N.N.D.) independently reviewed the abstracts from all identified articles. If necessary, full-text articles were obtained for review to allow further

§Address correspondence to Robert F. LaPrade, MD, PhD, Twin Cities Orthopedics, 4010 W. 65th St., Edina, MN 55435, USA (email: Laprademdphd@gmail.com).

*Beaumont Health, Royal Oak, Michigan, USA.

†Twin Cities Orthopedics, Edina, Minnesota, USA.

‡Oslo Sports Trauma Research Center, Oslo, Norway.

Final revision submitted November 20, 2021; accepted November 30, 2021.

One or more of the authors has declared the following potential conflict of interest or source of funding: R.F.L. has received grants from Arthrex, Linvatec, Ossur, and Smith & Nephew; consulting fees from Arthrex and Smith & Nephew; speaking fees from Smith & Nephew; and royalties from Arthrex and Smith & Nephew. AOSSM checks author disclosures against the Open Payments Database (OPD). AOSSM has not conducted an independent investigation on the OPD and disclaims any liability or responsibility relating thereto.

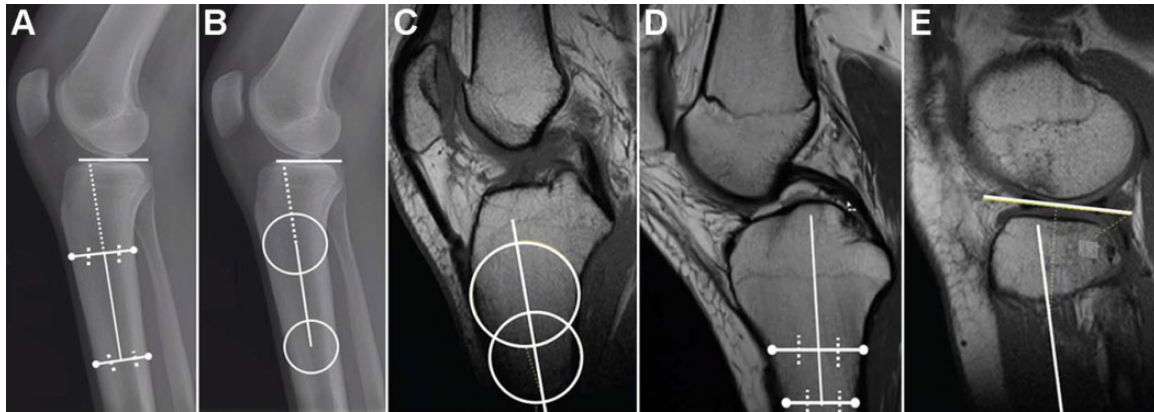


Figure 2. Illustrations of the PTS measurement methods considered in the current review. (A) Midpoint lines technique for measuring lateral PTS on standard radiographs previously described by Brandon et al.¹³ (B) Circles measurement technique on lateral radiographs by Vyas et al.¹⁰² (C) Circles measurement technique for establishing the vertical, anatomic axis component of the PTS measurement technique on MRI described by Hudek et al.⁴⁷ (D) Midpoint lines technique for identifying the anatomic axis of the PTS measurement technique on MRI described by Hashemi et al.³⁹ (E) Technique to identify the horizontal component of the lateral PTS, which is used concurrently with the techniques shown in either (C) or (D) to determine lateral PTS. MRI, magnetic resonance imaging; PTS, posterior tibial slope.

application of the established inclusion and exclusion criteria. In addition, reference lists from the included studies were reviewed and reconciled to verify that all eligible articles were considered.

Data Extraction

The variables of interest that were extracted from each study included average PTS measurements, PTS measurement location (medial or lateral PTS), imaging modality used to measure PTS, PTS measurement technique, indications for knee imaging (for intact cohort), country of origin of study, and primary versus revision ACL tear. In addition, descriptive article information and patient demographics were extracted and recorded from each study. The country of origin was defined by the corresponding authors' listed country. Some studies separated their cohorts into subgroups that were unable to be combined; these included groupings by sex, laterality (unilateral vs bilateral), outcomes (superior vs inferior), PTS (high vs low), and laxity (high vs low). These studies were therefore included as separate entries in the meta-analysis. Patients were grouped into 1 of 3 cohorts: intact ACL, primary ACL tear, or failed ACLR. Demographic variables, country of origin, PTS measurement technique, PTS measurement modality, and article descriptive information were not evaluated in the meta-analysis portion of the current study but were reported in the systematic review. Measurement modalities were grouped into radiographs, MRI, or CT.

The measurement techniques were grouped into 1 of 4 categories, each of which has been described previously in the literature (Figure 2). The first technique used MRI and measured the vertical component of the PTS measurement using the midpoint of parallel horizontal lines at least 4 cm apart and distal in the image.³⁹ The second technique utilized a sagittal MRI slice to place 2 circles: a superior circle

touching the anterior, posterior, and superior cortex of the tibia, and an inferior circle touching the anterior and posterior cortex.^{47,77} A vertical line was then drawn between the midpoint of both circles to establish the longitudinal component of the measurement. The third technique utilized standard radiographs.^{3,10,35} Points at 5 and 15 cm distal to the joint line on both the anterior and posterior tibial cortices were identified. The midpoint between the respective anterior and posterior points were then established. These midpoints were connected with a vertical line to establish the longitudinal axis of the PTS calculation. The fourth category included all other techniques, which included an adaptation of the circle measurement technique on standard radiographs, all measurements obtained on CT images, and techniques that considered the anterior or posterior tibial cortex exclusively. Based on previous studies, the minimal clinically significant difference (MCID) for PTS was defined as $\geq 2^\circ$,¹⁸ which represents the difference in measurements between the different locations (medial vs lateral).

Risk-of-Bias Evaluation

All studies were reviewed for bias using the previously reported Methodological Index for Non-Randomized Studies (MINORS) tool.⁸⁹ The MINORS tool includes 12 questions to assess quality, 4 of which are applicable only to those studies that are comparative. Each of the 12 items was scored 0 to 2: 0, not reported; 1, reported but described or performed poorly or inadequately; 2, reported accurately and well described. Higher scores are associated with a lower risk of bias. Scores of at least 75% were considered high quality with low risk for bias; scores between 50% and 75% were considered medium risk for bias; scores of less than or equal to 50% were considered high risk for bias. For

noncomparative studies, the maximum score was 16,¹⁶ while the maximum score for comparative studies was 24.

Statistical Analysis

Extracted and pooled outcomes of interest and related standard error were calculated using DerSimonian and Laird random effects models. Heterogeneity between studies was quantified using the I^2 statistic, in which an I^2 value of greater than 75% was used to indicate high heterogeneity. Random-effects models were used for all analyses. The difference between PTS measurements for each subgroup was conducted using the Altman interaction test. Two-tailed P values $< .05$ were determined to be statistically significant. All statistical analyses were conducted using open-source R software, version 4.0.5. Forest plots were created using OpenMetaAnalyst (Brown University) using the R console package.

RESULTS

The literature search identified 1705 unique studies, of which 82 were included in the final systematic review and meta-analysis (Figure 1). There were 40 studies that reported the PTS of patients with intact ACLs (Table 1), 65 studies that reported the PTS of patients with primary ACL tears (Table 2), and 18 studies that reported the PTS of at least 1 failed ipsilateral ACLR (Table 3).

In total, there were 12,971 patients, including 4028 (31%) patients in the intact ACL group, 7405 (57%) in the primary ACLR group, and 1538 (12%) in the failed ACLR group. There were 22 studies (27%) that reported only the medial PTS, 15 studies (18%) that reported only the lateral PTS, and 45 studies (55%) that reported both medial and lateral PTS.

The mean age range of included patients was 13.1 to 51.6 years.^{74,114} Among the included studies, 31 (38%) reported measurements obtained from lateral radiographs, 47 (57%) reported measurements obtained from MRI, and 4 (5%) reported measurements obtained from CT. The measurement techniques reported were as follows: studies that used the midpoint lines technique on MRI ($n = 26$), studies that used the midpoint lines technique on standard radiographs ($n = 17$), and studies that used the circles technique on MRI ($n = 23$). There were also 2 studies that used the anterior tibial cortex^{19,97} and 3 studies that used the posterior tibial cortex for their measurement techniques.^{43,44,86}

Results of Meta-Analysis

The average medial and lateral PTS for each subgroup is shown in Table 4, and forest plots for each analysis are provided as supplemental material. The meta-analysis demonstrated that the failed ACLR group had the largest average lateral PTS (9.55°; 95% CI, 8.47°-10.63°) (Supplemental Figure S1), followed by the primary ACL tear group (7.13°; 95% CI, 6.58°-7.67°) (Supplemental Figure S2) and the intact ACL group (5.57°; 95% CI, 5.03°-6.11°) (Supplemental Figure S3). The differences between each of these

means were found to be significant ($P < .001$) for each possible interaction (ie, intact ACL vs primary ACL tear, intact ACL vs revision ACL tear, primary ACL tear vs failed ACLR). An additional analysis demonstrated that the failed ACLR group had a significantly larger medial PTS (9.05°; 95% CI, 7.80°-10.30°) than the primary (6.24°; 95% CI, 5.71°-6.78°) or intact ACL (6.28°; 95% CI, 5.21°-7.35°) groups ($P < .001$) (Supplemental Figures S4-S6). The difference between mean medial PTS measurements from both the intact ACL and primary ACL groups compared with the failed ACLR group was found to be statistically significant ($P < .001$). The difference in mean medial PTS between the intact ACL and primary ACL groups was not statistically significant (6.28° vs 6.24°, respectively; $P = .948$).

The mean slope of the failed ACLR group was more than 2° larger than either the intact or primary ACL tear group in both the medial and lateral PTS measurements, which was greater than the previously established MCID ($\geq 2^\circ$ difference).¹⁸

Risk of Bias

Each of the studies were evaluated for quality and risk of bias using the MINORS tool. In total, there were 76 studies that were considered a low risk for bias and 6 studies with a medium risk for bias. The full results of this portion of the study can be viewed in Supplemental Table S1.

DISCUSSION

The primary finding of this systematic review and meta-analysis was that patients with failed ACLRs had significantly greater medial and lateral PTS than those with either intact native ACLs or those that had primary ACL tears. Moreover, the difference in mean PTS between the failed ACLR group and either the intact or primary ACL tear cohorts was greater than the previously established MCID.¹⁸ Ultimately, our hypothesis that patients with torn ACLR grafts would have significantly larger lateral PTS compared with patients with native ACLs or those with primary ACL tears was supported by the findings of the current analysis.

In the current analysis, patients in the failed ACLR cohort were found to have significantly larger medial and lateral PTS compared with patients in the intact ACL and primary ACL tear cohorts; the difference in mean PTS was greater than 2° for both medial and lateral PTS. In addition, the lateral PTS of the primary ACL tear group was significantly greater than the intact ACL cohort, whereas there was no significant difference between these subgroups with respect to medial PTS. A previous case series by Todd et al⁹⁸ included 140 total patients and concluded that patients with noncontact ACL injury had significantly larger PTS (9.39° vs 8.50°). Previous studies reached similar conclusions with respect to intact ACLs compared with torn ACLs.^{14,39,80,81} Additional studies have also reported increased PTS with 1 or more patients undergoing revision ACLR compared with those undergoing primary

TABLE 1
Demographics and Measurement Variables for Intact ACL Cohort^a

Lead Author (Year)	Total No. of Knees Included	Sex, M/F	Mean Age, y (Range or SD)	Measurement Modality	Measurement Technique ^b	Country of Origin	PTS: Medial, Lateral, or Both
Sun (2016) ⁹⁴	619	NA	Age range: 20-39 (n = 156); 30-39 (n = 145); 40-49 (n = 158); 50-59 (n = 160)	Radiograph	Midpoint lines (3)	China	Medial
Alentorn-Geli (2015) ³	53	53/0	33.7 (16-51)	MRI	Midpoint lines (1)	Spain	Both
Kizilgoz (2018) ⁵⁵	109	63/46	28.6 (0.6)	MRI	Midpoint lines (1)	Turkey	Both
Shen (2018) ⁸⁷	125	65/60	32.4 (9.7)	MRI	Circles (2)	China	Both
Bojicic (2017) ¹²	42	21/21	26.5 (8.3)	MRI	Circles (2)	USA	Lateral
Bisson (2009) ¹¹	40	20/20	33 (13.5)	MRI	Midpoint lines (1)	USA	Both
Vasta (2018) ¹⁰¹	200	100/100	24.3 (4.7)	Radiograph	Midpoint lines (3)	Italy	Lateral
Suprasanna (2019) ⁹⁶	33	14/19	30.2 (8.4)	MRI	Midpoint lines (1)	India	Both
Raja (2015) ⁷⁹	55	33/22	31.7	MRI	Midpoint lines (1)	India	Both
Sayit (2019) ⁸³	60	33/27	37 (21)	MRI	Circles (2)	Turkey	Both
Rahneimai-Azar (2016) ⁷⁸	45	45/0	20 (2)	MRI	Circles (2)	USA	Both
Dare (2015) ²¹	76	36/40	14.8 (1.3)	MRI	Midpoint lines (1)	USA	Both
Vyas (2011) ¹⁰²	23	NA	14.4	Radiograph	Midpoint lines (3)	USA	Medial
Hudek (2011) ⁴⁶	55	24/31	M: 32 (9); F: 36 (12)	MRI	Circles (2)	Switzerland	Both
Zeng (2016) ¹¹²	73	53/20	28.1 (8.7)	Radiograph	Midpoint lines (3)	China	Lateral
Hohmann (2011) ⁴⁴	272	199/73	26.5 (15-54)	Radiograph	Posterior tibial cortex (4)	Australia	Lateral
Waiwairole (2016) ¹⁰³	109	44/65	36 (14)	MRI	Circles (2)	USA	Both
Stijak (2007) ⁹³	33	21/12	30.1 (11.1)	Radiograph	Midpoint lines (3)	Serbia	Both
DePhillipo (2019) ²⁸	56	30/26	34.1 (15.3)	MRI	Circles (2)	USA	Lateral
Chung (2011) ¹⁹	20	16/4	28	Radiograph	Anterior tibial cortex (4)	Hong Kong	Medial
Shen (2019) ⁸⁸	50	38/12	27 (4.7)	MRI	Circles (2)	China	Both
Senisik (2011) ⁸⁵	54	54/0	23.8 (2)	Radiograph	Midpoint lines (3)	Turkey	Medial
Kizilgoz (2019) ⁵⁶	101	59/42	28 (18-49)	Radiograph	Midpoint lines (3)	Turkey	Medial
El Mansori (2017) ³⁰	100	52/48	18-86	MRI	Midpoint lines (1)	France	Both
Huang (2019) ⁴⁵	52	32/20	24.5 (5.1)	MRI	Midpoint lines (1)	China	Both
Hendrix (2016) ⁴¹	50	18/32	28.5 (14.5)	Radiograph	Circles (4)	USA	Lateral
Terauchi (2011) ⁹⁷	73	33/40	25.5 (14-44)	MRI	Anterior tibial cortex (4)	USA	Medial
Hashemi (2009) ⁴⁰	55	22/33	NA	MRI	Midpoint lines (1)	USA	Both
Brandon (2006) ¹⁴	100	51/49	NA	Radiograph	Midpoint lines (3)	USA	Medial
O'Malley (2005) ⁷⁴	32	24/8	13.1 (9-16)	Radiograph	Midpoint lines	USA	Medial
Kizilgoz (2019) ⁵⁴	81	81/0	NA	MRI	Midpoint lines (1)	Turkey	Both
Sonnery Cottet (2011) ⁹²	50	35/15	NA	Radiograph	Midpoint lines (3)	France	Medial
Todd (2011) ⁹⁸	179	126/53	NA	Radiograph	Midpoint lines (3)	USA	Medial
Ristic (2014) ⁸⁰	30	25/5	28.3 (16-56)	MRI	Circles (2)	Serbia	Both
Sundar (2016) ⁹⁵	290	140/150	40	MRI	Midpoint lines (1)	India	Both
Li (2020) ⁶³	32	23/9	37 (10.6)	Radiograph	Circles (4)	China	Lateral
Kwak (2021) ⁵⁹	100	75/5	14.4 (3.6)	MRI	Circles (2)	Korea	Both
Zikria (2020) ¹¹⁴	48	19/29	51.6 (13.9)	MRI	Circles (2)	USA	Both
Freitas (2021) ³⁴	433	NA	NA	MRI	Circles (2)	Brazil	Both
Edwards (2021) ²⁹	20	15/5	14.8 (2.4)	MRI	Circles (2)	England	Both

^aACL, anterior cruciate ligament; F, female; M, male; MRI, magnetic resonance imaging; NA, not available; PTS, posterior tibial slope.

^bThe numbers in parentheses correspond to the various measurement techniques: (1) midpoint lines technique using MRI; (2) circles technique using MRI; (3) midpoint lines using standard radiographs; (4) other (combination of circles on radiographs, posterior tibial cortex, anterior tibial cortex).

ACLR.^{20,31,72} A previous meta-analysis that included 14 studies reported greater lateral PTS in individuals with ACL injury than in those with intact ACLs.¹⁰⁷ However, the authors of the aforementioned meta-analysis reported that they were skeptical of this finding because of the wide variability in their included studies. We are more confident

in our findings in the current review because of the large number of studies and patients, and because of the large difference in pooled means between groups that we observed.

There was no clinical or statistical difference identified between the medial PTS of the intact ACL and primary

TABLE 2
Demographics and Measurement Variables for Primary ACL Tear Cohort^a

Lead Author (Year)	Total No. of Knees Included	Sex, M/F	Mean Age, y (Range or SD)	Measurement Modality	Measurement Technique ^b	Country of Origin	PTS: Medial, Lateral, or Both
Alentorn-Geli (2015) ³	46	46/0	33 (16-49)	MRI	Midpoint lines (1)	Spain	Both
Kiapour (2019) ⁵¹	43	15/28	23.7 (9.2)	MRI	Circles (2)	USA	Both
Grassi (2018) ³⁶	42	36/6	26.3 (8.4)	MRI	Midpoint lines (1)	Italy	Both
Shen (2018) ⁸⁷	125	65/60	32.4 (9.7)	MRI	Circles (2)	China	Both
Li (2014) ¹¹¹	20	NA	NA	MRI	Midpoint lines (1)	China	Both
Vasta (2018) ¹⁰¹	200	100/100	24.4 (4.8)	Radiograph	Midpoint lines (3)	Portugal	Lateral
Kiapour (2019) ⁵⁰	20	NA	24	MRI	Midpoint lines (1)	USA	Lateral
Suprasanna (2019) ⁹⁶	33	15/18	NA	MRI	Midpoint lines (1)	India	Both
Li (2014) ⁶¹	104	104/0	29.5 (6.3)	MRI	Midpoint lines (1)	China	Both
Lee (2018) ⁶⁰	64	58/6	31	Radiograph	Midpoint lines (3)	Korea	Medial
Hohmann (2010) ⁴³	68	51/17	28.5 (16-49)	Radiograph	Posterior tibial cortex (4)	Australia	Medial
Sayit (2015) ⁸³	60	35/25	39 (22)	MRI	Circles (2)	Turkey	Both
Song (2020) ⁹¹	60	47/9	25.1 (7.3)	Radiograph	Other (4)	China	Lateral
Oshima (2019) ⁷⁵	98	58/40	31.3 (10.3)	MRI	Midpoint lines (1)	Australia	Both
Schneider (2019) ⁸⁴	276	138/138	32.5 (12)	CT	Midpoint lines (4)	France	Medial
El Mansori (2018) ³⁰	362	238/124	32.1 (11)	CT	Midpoint lines (4)	France	Both
Li (2019) ⁶²	119	81/38	32.7 (11.4)	MRI	Circles (2)	China	Lateral
Rahenemai-Azar (2016) ⁷⁸	45	45/0	20 (2)	MRI	Circles (2)	USA	Both
Rahenemai-Azar (2016) ⁷⁸	53	36/17	26 (11)	MRI	Circles (2)	USA	Both
Jaeger (2018) ⁴⁸	69	48/1	31.9 (18-68)	MRI	Midpoint lines (1)	Germany	Both
Song (2016) ⁹⁰	106	86/20	26.1 (7.3)	MRI	Circles (2)	China	Medial
Napier (2019) ⁷²	280	210/70	27.7 (2.6)	Radiograph	Circles (4)	Australia	Both
Hohmann (2011) ⁴⁴	272	199/73	26 (15-54)	Radiograph	Posterior tibial cortex (4)	Australia	Lateral
Waiwai (2016) ¹⁰³	105	52/53	36 (14)	MRI	Circles (2)	USA	Both
Stijak (2007) ⁹³	33	21/12	29.9 (9.8)	Radiograph	Midpoint lines (3)	Serbia	Both
DePhillipo (2019) ²⁸	112	60/52	33.5 (15.7)	MRI	Circles (2)	USA	Lateral
Christianson (2015) ¹⁸	35	21/14	21.4	MRI	Midpoint lines (1)	USA	Lateral
Chung (2011) ¹⁹	28	25/3	26	Radiograph	Anterior tibial cortex (4)	Hong Kong	Medial
Choi (2019) ¹⁷	148	107/41	24.5 (4.1)	MRI	Circles (2)	Korea	Both
Shen (2019) ⁸⁸	50	30/20	28.5 (6.3)	MRI	Circles (2)	China	Both
Webb (2013) ¹⁰⁴	131	NA	26	Radiograph	Midpoint lines (3)	Australia	Medial
Sensisik (2011) ⁸⁵	27	10/17	22.7 (3.5)	Radiograph	Midpoint lines (3)	Turkey	Medial
Li (2014) ¹¹¹	40	28/12	23.5 (6.5)	MRI	Circles (2)	China	Both
Dejour (2018) ²⁵	151	173/78	29.8 (10.5)	Radiograph	Midpoint lines (3)	France	Medial
Mitchell (2018) ⁶⁹	363	193/170	31 (23-45)	Radiograph	Circles (4)	USA	Lateral
El Mansori (2017) ³⁰	100	67/33	NA (18-63)	MRI	Midpoint lines (1)	France	Both
Huang (2019) ⁴⁵	52	31/21	25.5 (5)	MRI	Midpoint lines (1)	China	Both
Hendrix (2016) ⁴¹	100	48/52	21.9 (11.1)	Radiograph	Circles (4)	USA	Lateral
Dekker (2017) ²⁶	58	21/37	14.1 (2.2)	Radiograph	NA	USA	Lateral
Kolbe (2018) ⁵⁷	59	37/22	30 (11)	MRI	Circles (2)	Germany	Both
Grassi (2019) ³⁵	40	34/6	26.2 (8.6)	MRI	Circles (4)	Italy	Both
Nagai (2018) ⁷⁰	25	19/6	20.5 (4.3)	CT	Circles (4)	Japan	Both
O'Malley (2005) ⁷⁴	32	23/9	13.1 (9-17)	Radiograph	Midpoint lines (1)	USA	Medial
Sauer (2018) ⁸²	54	NA	NA	MRI	Circles (2)	New Zealand	Lateral
Todd (2011) ⁹⁸	179	126/53	25.4 (8.7)	Radiograph	Midpoint lines (1)	USA	Medial
Ristic (2014) ⁸⁰	30	24/6	30.4 (9-59)	MRI	Circles (2)	Serbia	Both
Ahn (2017) ²	290	270/20	NA	Radiograph	Midpoint lines (3)	Korea	Medial
Grassi (2019) ³⁷	43	34/9	23.3 (19.6-23.2)	MRI	Midpoint lines (1)	Italy	Both
Kililgoz (2018) ⁵⁵	109	63/46	28.6 (0.6)	MRI	Midpoint lines (1)	Turkey	Both
Li (2020) ⁶³	32	23/9	37 (10.8)	Radiograph	Circles (4)	China	Lateral
Kim (2020) ⁵²	275	236/39	NA	MRI	Midpoint lines (1)	Korea	Both
Batty (2021) ⁵	618	299/319	18.9 (3.2)	Radiograph	Circles (4)		Lateral
Ziegler (2021) ¹¹³	109	51/58	32 (21-45)	MRI	Midpoint lines (1)	USA	Both
Oshima (2020) ⁷⁵	98	58/41	32.5 (11.7)	MRI	Circles (2)	Australia	Both

(continued)

Table 2 (continued)

Lead Author (Year)	Total No. of Knees Included	Sex, M/F	Mean Age, y (Range or SD)	Measurement Modality	Measurement Technique ^b	Country of Origin	PTS: Medial, Lateral, or Both
Freitas (2021) ³⁴	140	NA	NA	MRI	Circles (2)	Brazil	Both
Bernholt (2021) ¹⁰	206	NA	NA	MRI	Circles (2)	USA	Both
Yoon (2020) ¹¹⁰	232	183/49	28.2 (8.9)	MRI	Circles (2)	Korea	Both
Tradati (2020) ⁹⁹	43	28/15	25 (8)	MRI	Circles (2)	Luxembourg	Both
Nakazato (2021) ⁷¹	103	29/74	NA (14-58)	CT	Circles (4)	Japan	Both
Shelbourne (2021) ⁸⁶	126	NA	NA	Radiograph	Posterior tibial cortex (4)	USA	Medial
Mitchell (2021) ⁶⁹	114	NA	NA	Radiograph	Circles (4)	Canada	Lateral
Beel (2021) ⁶	56	42/14	26 (7)	MRI	Circles (2)	Luxembourg	Both
Hagiwara (2021) ³⁸	43	26/17	32.8 (14.8)	MRI	Midpoint lines (1)	Japan	Both
Kim (2021) ⁵³	226	192/34	NA	MRI	Midpoint lines (1)	Korea	Both
Ni (2020) ⁷³	25	18/7	28.9 (8.1)	Radiograph	Circles (4)	China	Medial

^aACL, anterior cruciate ligament; CT, computed tomography; F, female; M, male; MRI, magnetic resonance imaging; NA, not available; PTS, posterior tibial slope.

^bThe numbers in parentheses correspond to the various measurement techniques: (1) midpoint lines technique using MRI; (2) circles technique using MRI; (3) midpoint lines using standard radiographs; (4) other (combination of circles on radiographs, posterior tibial cortex, anterior tibial cortex).

TABLE 3
Demographics and Measurement Variables for Revision ACL Tear Cohort^a

Lead Author (Year)	Total No. of Knees Included	Sex, M/F	Age, y (Range or SD)	Measurement Modality	Measurement Technique ^b	Country of Origin	PTS: Medial, Lateral, or Both
Li (2014) ¹¹¹	20	NA	NA	MRI	Midpoint lines (1)	China	Both
Lee (2018) ⁶⁰	64	58/6	31	Radiograph	Midpoint lines (3)	Korea	Medial
Jaeker (2018) ⁴⁸	57	37/20	26.6 (18-46)	MRI	Midpoint lines (1)	Germany	Both
Christianson (2015) ¹⁸	35	21/14	21.2	MRI	Midpoint lines (1)	USA	Lateral
Webb (2013) ¹⁰⁴	35	NA	26	Radiograph	Midpoint lines (3)	Australia	Medial
Dejour (2018) ²⁵	124	65/59	32.3 (12.1)	Radiograph	Circles (4)	USA	Lateral
Yoon (2019) ¹⁰⁹	82	65/17	NA	Radiograph	Midpoint lines (3)	Korea	Lateral
Dekker (2017) ²⁶	27	13/14	13.6 (1.7)	Radiograph	NA	USA	Lateral
Grassi (2019) ³⁵	51	45/6	31.6 (10.2)	MRI	Circles (4)	Italy	Both
Ahmed (2017) ¹	29	16/13	26.4	Radiograph	Midpoint lines (3)	Australia	Medial
Sauer (2018) ⁸²	54	32/22	21.8 (18.6-26.7)	MRI	Circles (2)	New Zealand	Lateral
Grassi (2019) ³⁷	43	34/9	21.8 (18.6-26.7)	MRI	Midpoint lines (1)	Italy	Both
Winkler (2021) ¹⁰⁶	102	53/49	NA (13-58)	Radiograph	Midpoint lines (3)	USA	Medial
Ziegler (2021) ¹¹³	90	46/44	31.5 [IQR: 22.3, 42]	MRI	Midpoint lines (1)	USA	Both
Freitas (2021) ³⁴	32	NA	NA	MRI	Circles (2)	Brazil	Both
Alm (2021) ⁴	53	33/20	NA	Radiograph	Midpoint lines (3)	Germany	Medial
Mitchell (2021) ⁶⁹	39	NA	NA	Radiograph	Circles (4)	USA	Lateral
Winkler (2021) ¹⁰⁵	260	144/116	26.2 (9.4)	Radiograph	Midpoint lines (3)	USA	Both

^aACL, anterior cruciate ligament; F, female; IQR, interquartile range; M, male; MRI, magnetic resonance imaging; NA, not available; PTS, posterior tibial slope.

^bThe numbers in parentheses correspond to the various measurement techniques: (1) midpoint lines technique using MRI; (2) circles technique using MRI; (3) midpoint lines using standard radiographs; (4) other (combination of circles on radiographs, posterior tibial cortex, anterior tibial cortex).

ACL tear cohorts; these were the only groups that were not significantly different. This finding is supported in the literature by several studies that have postulated that the lateral slope is a more significant risk factor for ACL injury

than the medial slope.^{57,72,93,104} A study by Webb et al¹⁰⁴ found that ACL-deficient knees had significantly greater lateral PTS (5.7° vs 3.4°, *P* < .001) but not medial PTS (5.4° vs 5.1°, *P* = .42) compared with those with intact

TABLE 4
Medial and Lateral PTS Depending on ACL Status^a

	Lateral PTS, deg	Medial PTS, deg
Intact ACL ^b	5.57 (5.03-6.11)	6.28 (5.21-7.35)
Primary ACL tear	7.13 (6.58-7.67)	6.24 (5.71-6.78)
Revision ACL tear	9.55 (8.47-10.63)	9.05 (7.80-10.30)

^aData are reported as mean (95% CI). ACL, anterior cruciate ligament; PTS, posterior tibial slope.

^bMeasurements for the intact ACL group were obtained from patients who had non-ACL pathologies. These measurements were not obtained from the contralateral limb of patients with ACL tears.

ACLs. This conclusion is also supported by the biomechanical literature, which suggests that an increased lateral PTS is associated with greater anterior motion of the lateral compartment, which creates a net internal rotation that increases the strain on the ACL.^{9,33} Despite the findings from the current study and the supporting literature that lateral PTS likely has a greater effect on overall ACL strain than does medial PTS, several studies have shown that severe inclinations at either plateau can significantly affect overall ACL strain and that both the medial and lateral PTS likely affect ACL stability.^{9,67}

The current meta-analysis also provides accurate, updated normative values for 3 distinct cohorts based on ACL integrity: intact ACL, primary ACL tear, and failed ACLR. Specifically, for knee surgeons and sports medicine researchers, PTS is a growing area of interest and clinicians/researchers are often forced to reference larger case series when attempting to identify the average PTS of patients. The current study provides a large meta-analysis comprising more than 12,000 patients that surmises an accumulation of recent literature to accurately represent the global averages in slope based on ACL status/integrity.

This systematic review further highlights the true variety of imaging modalities and measurement strategies used to report PTS. Although the purpose of the current analysis was not to compare these modalities statistically, this systematic review of literature brought attention to this diversity. In the current analysis, 38% of studies reported measurements from lateral radiographs and 57% used MRI. A previous study concluded that MRI measurements tended to be smaller than those obtained from radiographs.⁴⁷ In addition, 18% of studies included in the current analysis reported only lateral PTS measurements and 27% reported strictly medial PTS; the literature shows that these values are significantly different.⁴² Finally, there are a variety of measurement techniques, including those that consider the anatomic axis, which is commonly identified using either the circle or midpoint lines technique; the mechanical axis; the posterior tibial cortex; or the anterior tibial cortex. Several studies have noted significant differences between measurement values from these measurement techniques.^{15,23,65,108} Specifically, one study with 140 total patients reported a significant difference in PTS

measurement techniques that utilized the anatomic axis from lateral long-leg tibia radiographs (11.6°) and standard lateral radiographs (11.8°) compared with those that considered the mechanical axis obtained from lateral long-leg tibia radiographs (9.5°); 55% of measurements from this study were more than 2° different when comparing the anatomic axis and mechanical axis for an individual on the same lateral radiograph.²³

We acknowledge that this systematic review and meta-analysis has some limitations. First, many of the included studies either did not include all demographic variables or did not provide measures of variation for these variables, and we were unable to include these data in the final analysis. As such, we are unable to exclude these as possible confounding variables that may have contributed to our findings. In addition, there were a variety of measurement techniques across the included studies, including 3 different imaging modalities. While all included techniques have been validated in the literature, we recognize that this could contribute to the variability within groups of the current analysis. Finally, the failed ACLR group is relatively heterogeneous as many of these studies included patients who underwent multiple rerevisions and because the specific reason for ACLR failure was not always noted in the individual studies.

CONCLUSION

This systematic review and meta-analysis found that both lateral and medial PTS measurements are greater in patients who had failed previous ACLR than those with a primary ACL tear or with an intact native ACL. In addition, the lateral PTS of patients with primary ACL tears is greater than those with an intact native ACL. Finally, the current analysis highlights the variety of measurement techniques and modalities used in the literature and emphasizes the importance of continuity in measurement reporting and referencing.

Supplemental material for this article is available at <http://journals.sagepub.com/doi/suppl/10.1177/23259671221079380>.

REFERENCES

1. Ahmed I, Salmon L, Roe J, Pinczewski L. The long-term clinical and radiological outcomes in patients who suffer recurrent injuries to the anterior cruciate ligament after reconstruction. *Bone Joint J.* 2017; 99(3):337-343.
2. Ahn JH, Kang HW, Choi KJ. Outcomes after double-bundle anterior cruciate ligament reconstruction. *Arthroscopy.* 2018;34(1):220-230.
3. Alentorn-Geli E, Pelfort X, Mingo F, et al. An evaluation of the association between radiographic intercondylar notch narrowing and anterior cruciate ligament injury in men: the notch angle is a better parameter than notch width. *Arthroscopy.* 2015;31(10):2004-2013.
4. Alm L, Drenck TC, Frings J, et al. Lower failure rates and improved patient outcome due to reconstruction of the MCL and revision ACL

- reconstruction in chronic medial knee instability. *Orthop J Sports Med.* 2021;9(3):2325967121989312.
5. Batty LM, Firth A, Moatshe G, et al. Association of ligamentous laxity, male sex, chronicity, meniscal injury, and posterior tibial slope with a high-grade preoperative pivot shift: a post hoc analysis of the STABILITY study. *Orthop J Sports Med.* 2021;9(4):232596712110000.
 6. Beel W, Mouton C, Tradati D, Nührenbörger C, Seil R. Ramp lesions are six times more likely to be observed in the presence of a posterior medial tibial bone bruise in ACL-injured patients. *Knee Surg Sports Traumatol Arthrosc.* 2022;30(1):184-191.
 7. Bernhardtson AS, Aman ZS, DePhillipo NN, et al. Tibial slope and its effect on graft force in posterior cruciate ligament reconstructions. *Am J Sports Med.* 2019;47(5):1168-1174.
 8. Bernhardtson AS, Aman ZS, Dornan GJ, et al. Tibial slope and its effect on force in anterior cruciate ligament grafts: anterior cruciate ligament force increases linearly as posterior tibial slope increases. *Am J Sports Med.* 2019;47(2):296-302.
 9. Bernhardtson AS, DePhillipo NN, Aman ZS, Kennedy MI, Dornan GJ, LaPrade RF. Decreased posterior tibial slope does not affect postoperative posterior knee laxity after double-bundle posterior cruciate ligament reconstruction. *Am J Sports Med.* 2019;47(2):318-323.
 10. Bernholt D, DePhillipo NN, Aman ZS, Samuelsen BT, Kennedy MI, LaPrade RF. Increased posterior tibial slope results in increased incidence of posterior lateral meniscal root tears in ACL reconstruction patients. *Knee Surg Sports Traumatol Arthrosc.* 2021;29(11):3883-3891.
 11. Bisson LJ, Gurske-DePerio J. Axial and sagittal knee geometry as a risk factor for noncontact anterior cruciate ligament tear: a case-control study. *Arthroscopy.* 2010;26(7):901-906.
 12. Bojicic KM, Beaulieu ML, Imaizumi Krieger DY, Ashton-Miller JA, Wojtyls EM. Association between lateral posterior tibial slope, body mass index, and ACL injury risk. *Orthop J Sports Med.* 2017;5(2):2325967116688664.
 13. Brandon ML, Haynes PT, Bonamo JR, Flynn MII, Barrett GR, Sherman MF. The association between posterior-inferior tibial slope and anterior cruciate ligament insufficiency. *Arthroscopy.* 2006;22(8):894-899.
 14. Brandon ML, Haynes PT, Bonamo JR, Flynn MII, Barrett GR, Sherman MF. The association between posterior-inferior tibial slope and anterior cruciate ligament insufficiency. *Arthroscopy.* 2006;22(8):894-899.
 15. Brazier J, Migaud H, Gougeon F, Cotten A, Fontaine C DA. Evaluation of methods for radiographic measurement of the tibial slope. A study of 83 healthy knees. Article in French. *Rev Chir Orthop Reparatrice Appar Mot.* 1996;82(3):195-200.
 16. Chen LC, Chan YS, Wang CJ. Opening-wedge osteotomy, allografting with dual buttress plate fixation for severe genu recurvatum caused by partial growth arrest of the proximal tibial physis: a case report. *J Orthop Trauma.* 2004;18(6):384-387.
 17. Choi WR, Yang JH, Jeong SY, Lee JK. MRI comparison of injury mechanism and anatomical factors between sexes in noncontact anterior cruciate ligament injuries. *PLoS One.* 2019;14(8):e0219586.
 18. Christensen JJ, Krych AJ, Engasser WM, Vanhees MK, Collins MS, Dahm DL. Lateral tibial posterior slope is increased in patients with early graft failure after anterior cruciate ligament reconstruction. *Am J Sports Med.* 2015;43(10):2510-2514.
 19. Chung SC-y, Chan W-l, Wong S-h. Lower limb alignment in anterior cruciate ligament-deficient versus -intact knees. *J Orthop Surg.* 2011;19(3):303-308.
 20. Cooper JD, Wang W, Prentice HA, Funahashi TT, Maletis GB. The Association between tibial slope and revision anterior cruciate ligament reconstruction in patients ≤ 21 years old: a matched case-control study including 317 revisions. *Am J Sports Med.* 2019;47(14):3330-3338.
 21. Dare DM, Fabricant PD, McCarthy MM, et al. Increased lateral tibial slope is a risk factor for pediatric anterior cruciate ligament injury: an MRI-based case-control study of 152 patients. *Am J Sports Med.* 2015;43(7):1632-1639.
 22. Dean RS, Beck EC, Waterman BR. Knee malignment: is there a role for correction in primary ACLR? *Oper Tech Sports Med.* 2021;29(2):150833.
 23. Dean RS, DePhillipo NN, Chahla J, Larson CM, LaPrade RF. Posterior tibial slope measurements using the anatomic axis are significantly increased compared with those that use the mechanical axis. *Arthroscopy.* 2021;37(1):243-249.
 24. Dean RS, Larson CM, Waterman BR. Posterior tibial slope: understand bony morphology to protect knee cruciate ligament grafts. *Arthroscopy.* 2021;37(7):2029-2030.
 25. Dejour D, Pungitore M, Valluy J, Nover L, Saffarini M, Demey G. Preoperative laxity in ACL-deficient knees increases with posterior tibial slope and medial meniscal tears. *Knee Surg Sports Traumatol Arthrosc.* 2019;27(2):564-572.
 26. Dekker TJ, Godin JA, Dale KM, Garrett WE, Taylor DC, Riboh JC. Return to sport after pediatric anterior cruciate ligament reconstruction and its effect on subsequent anterior cruciate ligament injury. *J Bone Joint Surg Am.* 2017;99(11):897-904.
 27. DePhillipo NN, Kennedy MI, Dekker TJ, Aman ZS, Grantham WJ, LaPrade RF. Anterior closing wedge proximal tibial osteotomy for slope correction in failed ACL reconstructions. *Arthrosc Tech.* 2019;8(5):e451-e457.
 28. DePhillipo NN, Zeigler CG, Dekker TJ, et al. Lateral posterior tibial slope in male and female athletes sustaining contact versus noncontact anterior cruciate ligament tears: a prospective study. *Am J Sports Med.* 2019;47(8):1825-1830.
 29. Edwards TC, Naqvi AZ, Dela Cruz N, Gupta CM. Predictors of pediatric anterior cruciate ligament injury: the influence of steep lateral posterior tibial slope and its relationship to the lateral meniscus. *Arthroscopy.* 2021;37(5):1599-1609.
 30. Elmansori A, Lording T, Dumas R, Elmajri K, Neyret P, Lustig S. Proximal tibial bony and meniscal slopes are higher in ACL injured subjects than controls: a comparative MRI study. *Knee Surg Sports Traumatol Arthrosc.* 2017;25(5):1598-1605.
 31. Engler ID, Salzler MJ, Wall AJ, et al. Patient-reported outcomes after multiple-revision ACL reconstruction: good but not great. *Arthrosc Sport Med Rehabil.* 2020;2(5):e539-e546.
 32. Faschingbauer M, Sgroi M, Juchems M, Reichel H, Kappe T. Can the tibial slope be measured on lateral knee radiographs? *Knee Surg Sports Traumatol Arthrosc.* 2014;22(12):3163-3167.
 33. Fleming BC, Renstrom PA, Beynon BD, et al. The effect of weight-bearing and external loading on anterior cruciate ligament strain. *J Biomech.* 2001;34(2):163-170.
 34. Freitas EV, Perez MK, Jimenez AE, et al. Higher meniscal slope is a risk factor for anterior cruciate ligament injury in skeletally immature patients. *Arthroscopy.* 2021;37(8):2582-2588.
 35. Grassi A, Macchiarola L, Urrizola Barrientos F, et al. Steep posterior tibial slope, anterior tibial subluxation, deep posterior lateral femoral condyle, and meniscal deficiency are common findings in multiple anterior cruciate ligament failures: an MRI case-control study. *Am J Sports Med.* 2019;47(2):285-295.
 36. Grassi A, Signorelli C, Urrizola F, et al. Anatomical features of tibia and femur: influence on laxity in the anterior cruciate ligament deficient knee. *Knee.* 2018;25(4):577-587.
 37. Grassi A, Signorelli C, Urrizola F, et al. Patients with failed anterior cruciate ligament reconstruction have an increased posterior lateral tibial plateau slope: a case-controlled study. *Arthroscopy.* 2019;35(4):1172-1182.
 38. Hagiwara K, Terauchi M, Hatayama K, Yanagisawa S, Ohsawa T, Kimura M. Sagittal inclination angle of graft is associated with knee stability after anatomic anterior cruciate ligament reconstruction. *Arthroscopy.* 2021;37(8):2533-2541.
 39. Hashemi J, Chandrashekar N, Gill B, et al. The geometry of the tibial plateau and its influence on the biomechanics of the tibiofemoral joint. *J Bone Joint Surg Am.* 2008;90(12):2724-2734.
 40. Hashemi J, Chandrashekar N, Mansouri H, et al. Shallow medial tibial plateau and steep medial and lateral tibial slopes: new risk factors for anterior cruciate ligament injuries. *Am J Sports Med.* 2010;38(1):54-62.
 41. Hendrix ST, Barrett AM, Chrea B, Replogle WH, Hydrick JM, Barrett GR. Relationship between posterior-inferior tibial slope and bilateral noncontact ACL injury. *Orthopedics.* 2017;40(1):e136-e140.

42. Herbst E, Imhoff A, Irrgang J, Anderst W, Fu F. The difference between the medial and lateral posterior tibial slope is associated with greater internal tibial rotation. *Orthop J Sports Med.* 2018;6(4 suppl 2):2325967118S0003.
43. Hohmann E, Bryant A, Reaburn P, Tetsworth K. Does posterior tibial slope influence knee functionality in the anterior cruciate ligament-deficient and anterior cruciate ligament-reconstructed knee? *Arthroscopy.* 2010;26(11):1496-1502.
44. Hohmann E, Bryant A, Reaburn P, Tetsworth K. Is there a correlation between posterior tibial slope and non-contact anterior cruciate ligament injuries? *Knee Surg Sports Traumatol Arthrosc.* 2011;19(suppl 1):S109-S114.
45. Huang M, Li Y, Guo N, Liao C, Yu B. Relationship between intercondylar notch angle and anterior cruciate ligament injury: a magnetic resonance imaging analysis. *J Int Med Res.* 2019;47(4):1602-1609.
46. Hudek R, Fuchs B, Regenfelder F, Koch PP. Is noncontact ACL injury associated with the posterior tibial and meniscal slope? *Clin Orthop Relat Res.* 2011;469(8):2377.
47. Hudek R, Schmutz S, Regenfelder F, Fuchs B, Koch PP. Novel measurement technique of the tibial slope on conventional MRI. *Clin Orthop Relat Res.* 2009;467(8):2066-2072.
48. Jaecker V, Drouven S, Naendrup JH, Kanakamedala AC, Pfeiffer T, Shafizadeh S. Increased medial and lateral tibial posterior slopes are independent risk factors for graft failure following ACL reconstruction. *Arch Orthop Trauma Surg.* 2018;138(10):1423-1431.
49. Kang K-T, Kwon SK, Son J, Kwon O-R, Lee J-S, Koh Y-G. The increase in posterior tibial slope provides a positive biomechanical effect in posterior-stabilized total knee arthroplasty. *Knee Surg Sports Traumatol Arthrosc.* 2018;26(10):3188-3195.
50. Kiapour AM, Ecklund K, Murray MM, et al. Changes in cross-sectional area and signal intensity of healing anterior cruciate ligaments and grafts in the first 2 years after surgery. *Am J Sports Med.* 2019;47(8):1831-1843.
51. Kiapour AM, Yang DS, Badger GJ, et al. Anatomic features of the tibial plateau predict outcomes of ACL reconstruction within 7 years after surgery. *Am J Sports Med.* 2019;47(2):303-311.
52. Kim SH, Seo HJ, Seo DW, K-II Kim, Lee SH. Analysis of risk factors for ramp lesions associated with anterior cruciate ligament injury. *Am J Sports Med.* 2020;48(7):1673-1681.
53. Kim SH, Seo JH, Kim DA, Lee JW, K-II Kim, Lee SH. Steep posterior lateral tibial slope, bone contusion on lateral compartments and combined medial collateral ligament injury are associated with the increased risk of lateral meniscal tear. *Knee Surg Sports Traumatol Arthrosc.* 2022;30(1):298-308.
54. Kızılğöz V, Sivrioğlu AK, Aydın H, Ulusoy GR, Çetin T, Tuncer K. The combined effect of body mass index and tibial slope angles on anterior cruciate ligament injury risk in male knees: a case-control study. *Clin Med Insights Arthritis Musculoskeletal Disord.* 2019;12:1179544119867922.
55. Kızılğöz V, Sivrioğlu AK, Ulusoy GR, Aydın H, Karayol SS, Menderes U. Analysis of the risk factors for anterior cruciate ligament injury: an investigation of structural tendencies. *Clin Imaging.* 2018;50:20-30.
56. Kızılğöz V, Sivrioğlu AK, Ulusoy GR, Yıldız K, Aydın H, Çetin T. Posterior tibial slope measurement on lateral knee radiographs as a risk factor of anterior cruciate ligament injury: a cross-sectional study. *Radiography.* 2019;25(1):33-38.
57. Kolbe R, Schmidt-Hebbel A, Forkel P, Pogorzelski J, Imhoff AB, Feucht MJ. Steep lateral tibial slope and lateral-to-medial slope asymmetry are risk factors for concomitant posterolateral meniscus root tears in anterior cruciate ligament injuries. *Knee Surg Sports Traumatol Arthrosc.* 2019;27(8):2585-2591.
58. Kumar Panigrahi T, Das A, Mohanty T, Samanta S, Kumar Mohapatra S. Study of relationship of posterior tibial slope in anterior cruciate ligament injury. *J Orthop.* 2020;21:487-490.
59. Kwak YH, Nam JH, Koh YG, Park BK, Kang KT. Anatomic differences in the sagittal knee joint are associated with ACL injury: results from a skeletally immature Korean population. *Orthop J Sports Med.* 2021;9(4):2325967121994795.
60. Lee CC, Youm YS, Do Cho S, et al. Does posterior tibial slope affect graft rupture following anterior cruciate ligament reconstruction? *Arthroscopy.* 2018;34(7):2152-2155.
61. Li H, Chen S, Tao H, Li H, Chen S. Correlation analysis of potential factors influencing graft maturity after anterior cruciate ligament reconstruction. *Orthop J Sports Med.* 2014;2(10):2325967114553552.
62. Li K, Li J, Zheng X, et al. Increased lateral meniscal slope is associated with greater incidence of lateral bone contusions in noncontact ACL injury. *Knee Surg Sports Traumatol Arthrosc.* 2020;28(6):2000-2008.
63. Li R, Yuan X, Fang Z, Liu Y, Chen X, Zhang J. A decreased ratio of height of lateral femoral condyle to anteroposterior diameter is a risk factor for anterior cruciate ligament rupture. *BMC Musculoskelet Disord.* 2020;21(1):402.
64. Li Y, Hong L, Feng H, Wang QQ, Zhang H, Song GY. Are failures of anterior cruciate ligament reconstruction associated with steep posterior tibial slopes? A case control study. *Chin Med J (Engl).* 2014;127(14):2649-2653.
65. Lipps DB, Wilson AM, Ashton-Miller JA, Wojtys EM. Evaluation of different methods for measuring lateral tibial slope using magnetic resonance imaging. *Am J Sports Med.* 2012;40(12):2731-2736.
66. Mansori AE, Lording T, Schneider A, Dumas R, Servien E, Lustig S. Incidence and patterns of meniscal tears accompanying the anterior cruciate ligament injury: possible local and generalized risk factors. *Int Orthop.* 2018;42(9):2113-2121.
67. Marouane H, Shirazi-Adl A, Adouni M, Hashemi J. Steeper posterior tibial slope markedly increases ACL force in both active gait and passive knee joint under compression. *J Biomech.* 2014;47(6):1353-1359.
68. Matsuda S, Miura H, Nagamine R, et al. Posterior tibial slope in the normal and varus knee. *Am J Knee Surg.* 1999;12(3):165-168.
69. Mitchell BC, Siow MY, Bastrom T, et al. Predictive value of the magnetic resonance imaging-based coronal lateral collateral ligament sign on adolescent anterior cruciate ligament reconstruction graft failure. *Am J Sports Med.* 2021;49(4):935-940.
70. Nagai K, Tashiro Y, Herbst E, et al. Steeper posterior tibial slope correlates with greater tibial tunnel widening after anterior cruciate ligament reconstruction. *Knee Surg Sports Traumatol Arthrosc.* 2018;26(12):3717-3723.
71. Nakazato K, Taketomi S, Inui H, Yamagami R, Kawaguchi K, Tanaka S. Lateral posterior tibial slope and length of the tendon within the tibial tunnel are independent factors to predict tibial tunnel widening following anatomic anterior cruciate ligament reconstruction. *Knee Surg Sports Traumatol Arthrosc.* 2021;29(11):3818-3824.
72. Napier RJ, Garcia E, Devitt BM, Feller JA, Webster KE. Increased radiographic posterior tibial slope is associated with subsequent injury following revision anterior cruciate ligament reconstruction. *Orthop J Sports Med.* 2019;7(11):2325967119879373.
73. Ni QK, Song GY, Zhang ZJ, et al. Steep posterior tibial slope and excessive anterior tibial translation are predictive risk factors of primary anterior cruciate ligament reconstruction failure: a case-control study with prospectively collected data. *Am J Sports Med.* 2020;48(12):2954-2961.
74. O'Malley MP, Milewski MD, Solomito MJ, Erwtman AS, Nissen CW. The association of tibial slope and anterior cruciate ligament rupture in skeletally immature patients. *Arthroscopy.* 2015;31(1):77-82.
75. Oshima T, Putnis S, Grasso S, Klasan A, Parker DA. Graft size and orientation within the femoral notch affect graft healing at 1 year after anterior cruciate ligament reconstruction. *Am J Sports Med.* 2020;48(1):99-108.
76. Pangaud C, Laumonerie P, Dagneaux L, et al. Measurement of the posterior tibial slope depends on ethnicity, sex, and lower limb alignment: a computed tomography analysis of 378 healthy participants. *Orthop J Sports Med.* 2020;8(1):2325967119895258.
77. Pietrini SD, Laprade RF, Griffith CJ, Wijdicks CA, Ziegler CG. Radiographic identification of the primary posterolateral knee structures. *Am J Sports Med.* 2009;37(3):542-551.

78. Rahnama-Azar AA, Yaseen Z, Van Eck CF, Irrgang JJ, Fu FH, Musahl V. Increased lateral tibial plateau slope predisposes male college football players to anterior cruciate ligament injury. *J Bone Joint Surg Am*. 2016;98(12):1001-1006.
79. Raja B, Marathe N, Desai J, Dahapute A, Shah S, Chavan A. Evaluation of anatomic risk factors using magnetic resonance imaging in non-contact anterior cruciate ligament injury. *J Clin Orthop Trauma*. 2019;10(4):710-715.
80. Ristić V, Maljanović MC, Pericin B, Harhaji V, Milankov M. The relationship between posterior tibial slope and anterior cruciate ligament injury. *Med Pregl*. 2014;67(7-8):216-221.
81. Sauer S, English R, Clatworthy M. The influence of tibial slope on anterior cruciate ligament graft failure risk is dependent on graft positioning. *J Orthop Surg*. 2019;27(1):2309499019834674.
82. Sauer S, English R, Clatworthy M. The ratio of tibial slope and meniscal bone angle for the prediction of ACL reconstruction failure risk. *Surg J*. 2018;4(3):e152-e159.
83. Sayit E, Sayit AT, Terzi Y. Evaluation of the posterior tibial slope in noncontact ACL injuries using magnetic resonance imaging. *Acta Orthop Belg*. 2017;83(2):245-250.
84. Schneider A, Arias C, Bankhead C, Gaillard R, Lustig S, Servien E. Greater medial tibial slope is associated with increased anterior tibial translation in females with an ACL-deficient knee. *Knee Surg Sports Traumatol Arthrosc*. 2020;28(6):1901-1908.
85. Senişik S, Ozgürbüz C, Ergün M, et al. Posterior tibial slope as a risk factor for anterior cruciate ligament rupture in soccer players. *J Sports Sci Med*. 2011;10(4):763-767.
86. Shelbourne KD, Benner RW, Jones JA, Gray T. Posterior tibial slope in patients undergoing anterior cruciate ligament reconstruction with patellar tendon autograft: analysis of subsequent ACL graft tear or contralateral ACL tear. *Am J Sports Med*. 2021;49(3):620-625.
87. Shen L, Jin ZG, Dong QR, Li LB. Anatomical risk factors of anterior cruciate ligament injury. *Chin Med J (Engl)*. 2018;131(24):2960-2967.
88. Shen X, Xiao J, Yang Y, et al. Multivariable analysis of anatomic risk factors for anterior cruciate ligament injury in active individuals. *Arch Orthop Trauma Surg*. 2019;139(9):1277-1285.
89. Slim K, Nini E, Forestier D, Kwiatkowski F, Panis Y, Chipponi J. Methodological index for non-randomized studies (Minors): development and validation of a new instrument. *ANZ J Surg*. 2003;73(9):712-716.
90. Song GY, Liu X, Zhang H, et al. Increased medial meniscal slope is associated with greater risk of ramp lesion in noncontact anterior cruciate ligament injury. *Am J Sports Med*. 2016;44(8):2039-2046.
91. Song GY, Zhang H, Zhang J, Zhang ZJ, Zheng T, Feng H. Excessive preoperative anterior tibial subluxation in extension is associated with inferior knee stability after anatomic anterior cruciate ligament reconstruction. *Am J Sports Med*. 2020;48(3):573-580.
92. Sonnery-Cottet B, Archbold P, Cucurulo T, et al. The influence of the tibial slope and the size of the intercondylar notch on rupture of the anterior cruciate ligament. *J Bone Joint Surg Br*. 2011;93(11):1475-1478.
93. Stijak L, Herzog RF, Schai P. Is there an influence of the tibial slope of the lateral condyle on the ACL lesion? A case-control study. *Knee Surg Sports Traumatol Arthrosc*. 2008;16(2):112-117.
94. Sun YH, Chen LX, De Jiao Z, et al. Age-related changes of posterior tibial slope and its roles in anterior cruciate ligament injury. *Int Surg*. 2016;101(1):70-77.
95. Sundar S, Patnaik S, Ubaydullaev B, Kolandavelu V, Rajan D. Tibial plateau slopes in Indian patients with or without anterior cruciate ligament injury: a magnetic resonance imaging study. *J Orthop Surg*. 2016;24(3):289-293.
96. Suprasanna K, Chamala T, Kumar A. Comparison of anatomical risk factors for noncontact anterior cruciate ligament injury using magnetic resonance imaging. *J Clin Orthop Trauma*. 2019;10(1):143-148.
97. Terauchi M, Hatayama K, Yanagisawa S, Saito K, Takagishi K. Sagittal alignment of the knee and its relationship to noncontact anterior cruciate ligament injuries. *Am J Sports Med*. 2011;39(5):1090-1094.
98. Todd MS, Lalliss S, Garcia E, DeBerardino TM, Cameron KL. The relationship between posterior tibial slope and anterior cruciate ligament injuries. *Am J Sports Med*. 2010;38(1):63-67.
99. Tradati D, Mouton C, Urhausen A, Beel W, Nührenböcker C, Seil R. Lateral meniscal slope negatively affects post-operative anterior tibial translation at 1 year after primary anterior cruciate ligament reconstruction. *Knee Surg Sports Traumatol Arthrosc*. 2020;28(11):3524-3531.
100. Utzschneider S, Goettinger M, Weber P, et al. Development and validation of a new method for the radiologic measurement of the tibial slope. *Knee Surg Sports Traumatol Arthrosc*. 2011;19(10):1643-1648.
101. Vasta S, Andrade R, Pereira R, et al. Bone morphology and morphometry of the lateral femoral condyle is a risk factor for ACL injury. *Knee Surg Sports Traumatol Arthrosc*. 2018;26(9):2817-2825.
102. Vyas S, van Eck CF, Vyas N, Fu FH, Otsuka NY. Increased medial tibial slope in teenage pediatric population with open physes and anterior cruciate ligament injuries. *Knee Surg Sports Traumatol Arthrosc*. 2011;19(3):372-377.
103. Waiwaiola A, Gurbani A, Motamedi K, et al. Relationship of ACL injury and posterior tibial slope with patient age, sex, and race. *Orthop J Sports Med*. 2016;4(11):2325967116672852.
104. Webb JM, Salmon LJ, Leclerc E, Pinczewski LA, Roe JP. Posterior tibial slope and further anterior cruciate ligament injuries in the anterior cruciate ligament-reconstructed patient. *Am J Sports Med*. 2013;41(12):2800-2804.
105. Winkler PW, Vivacqua T, Thomassen S, et al. Quadriceps tendon autograft is becoming increasingly popular in revision ACL reconstruction. *Knee Surg Sports Traumatol Arthrosc*. 2022;30(1):149-160.
106. Winkler PW, Wagala NN, Hughes JD, Lesniak BP, Musahl V. A high tibial slope, allograft use, and poor patient-reported outcome scores are associated with multiple ACL graft failures. *Knee Surg Sports Traumatol Arthrosc*. 2022;30(1):139-148.
107. Wordeman SC, Quatman CE, Kaeding CC, Hewett TE. In vivo evidence for tibial plateau slope as a risk factor for anterior cruciate ligament injury: a systematic review and meta-analysis. *Am J Sports Med*. 2012;40(7):1673-1681.
108. Yoo JH, Chang CB, Shin KS, Seong SC, Kim TK. Anatomical references to assess the posterior tibial slope in total knee arthroplasty: a comparison of 5 anatomical axes. *J Arthroplasty*. 2008;23(4):586-592.
109. Yoon KH, Kim JH, Kwon YB, Kim EJ, Kim SG. Re-revision anterior cruciate ligament reconstruction showed more laxity than revision anterior cruciate ligament reconstruction at a minimum 2-year follow-up. *Knee Surg Sports Traumatol Arthrosc*. 2020;28(6):1909-1918.
110. Yoon KH, Park SY, Park JY, et al. Influence of posterior tibial slope on clinical outcomes and survivorship after anterior cruciate ligament reconstruction using hamstring autografts: a minimum of 10-year follow-up. *Arthroscopy*. 2020;36(10):2718-2727.
111. Yue L, Lei H, Hua F, Qianqian W, Hui Z, Guanyang S. Are failures of anterior cruciate ligament reconstruction associated with steep posterior tibial slopes? A case control study. *Chin Med J (Engl)*. 2014;127(14):2649-2653.
112. Zeng C, Yang T, Wu S, et al. Is posterior tibial slope associated with noncontact anterior cruciate ligament injury? *Knee Surg Sports Traumatol Arthrosc*. 2016;24(3):830-837.
113. Ziegler CG, DePhillipo NN, Kennedy MI, Dekker TJ, Dornan GJ, LaPrade RF. Beighton score, tibial slope, tibial subluxation, quadriceps circumference difference, and family history are risk factors for anterior cruciate ligament graft failure: a retrospective comparison of primary and revision anterior cruciate ligament reconstructions. *Arthroscopy*. 2021;37(1):195-205.
114. Zikria B, Johnson A, Hafezi-Nejad N, et al. Association between MRI-based tibial slope measurements and mucoid degeneration of the anterior cruciate ligament: a propensity score-matched case-control study. *Orthop J Sports Med*. 2020;8(11):2325967120962804.