

CURRENT CONCEPTS REVIEW

Chondral Lesions of the Knee: An Evidence-Based Approach

MAJ Travis J. Dekker, MD, USAF, MC, Zachary S. Aman, MS, BA, Nicholas N. DePhillipo, PhD, MS, ATC, CSCS, LT COL
Jonathan F. Dickens, MD, USA, MC, Adam W. Anz, MD, and Robert F. LaPrade, MD, PhD

- Management of chondral lesions of the knee is challenging and requires assessment of several factors including the size and location of the lesion, limb alignment and rotation, and the physical and mental health of the individual patient.
- There are a multitude of options to address chondral pathologies of the knee that allow individualized treatment for the specific needs and demands of the patient.
- Osteochondral autograft transfer remains a durable and predictable graft option in smaller lesions (<2 cm²) in the young and active patient population.
- Both mid-term and long-term results for large chondral lesions (≥3 cm²) of the knee have demonstrated favorable results with the use of osteochondral allograft or matrix-associated chondrocyte implantation.
- Treatment options for small lesions (<2 cm²) include osteochondral autograft transfer and marrow stimulation and/or microfracture with biologic adjunct, while larger lesions (≥2 cm²) are typically treated with osteochondral allograft transplantation, particulated juvenile articular cartilage, or matrix-associated chondrocyte implantation.
- Emerging technologies, such as allograft scaffolds and cryopreserved allograft, are being explored for different graft sources to address complex knee chondral pathology; however, further study is needed.

Cartilage injuries of the knee can be challenging to treat. The focus of this review is on injuries involving the femoral condyles or patellofemoral articular cartilage that result from overuse, direct trauma, malalignment, or malrotation. Cartilage lesions are commonly encountered in patients undergoing knee arthroscopy, with surgeons encountering chondral defects in up to 36% of knees^{1,2}. Treatment options are variable and dependent on many factors, including patient age and activity level, location and size of the defect, meniscal status, limb alignment, concomitant knee pathologies, chronicity, and comorbidities. For example, concomitant varus-producing osteotomies are performed in the setting of lateral compartment pathology with genu valgum; valgus-producing osteotomies, for medial compartment pathology in the setting

of genu varum; and tibial tubercle osteotomies, in the setting of maltracking with increased tibial tuberosity-to-trochlear groove distance of >2 cm and patella alta (a Caton-Deschamps ratio of >1.2). Regardless of the cartilage repair technique, careful patient selection and management of associated concomitant pathologies is of paramount importance to optimize the outcome.

Nonoperative treatment of symptomatic cartilage injuries is preferred at times, especially for patients with tri-compartmental osteoarthritis or those who are nonsurgical candidates. Once injured, cartilage is unable to fully regenerate because of poor vascularity and the limited number of chondrocytes. While cartilage has poor natural regenerative capacity, there is potential for fibrocartilage growth or

Disclosure: The authors indicated that no external funding was received for any aspect of this work. On the **Disclosure of Potential Conflicts of Interest** forms, which are provided with the online version of the article, one or more of the authors checked “yes” to indicate that the author had a relevant financial relationship in the biomedical arena outside the submitted work and “yes” to indicate that the author had other relationships or activities that could be perceived to influence, or have the potential to influence, what was written in this work (<http://links.lww.com/JBJS/G306>).

TABLE I Summary of Microfracture Studies within the Previous 6 Years*

Study	Study Design (Level of Evidence)	Sample Size (no. of patients)	Duration of Follow-up†	Lesion Size†	Primary Outcome Evaluated	Results	Failure Rate (%)
Brittberg et al. ¹⁰⁵ (2018)	RCT (I)	59	5 yr	4.9 ± 2.0 cm ²	KOOS pain and function and SF-12	MF significantly worse than MACI for KOOS pain, KOOS function, modified Cincinnati, and SF-12 Physical Component	5.1
Knutsen et al. ¹⁰⁶ (2016)	RCT (I)	40	15 yr	1.4-11.2	VAS, Lysholm, and SF-36 Physical Component	No difference between MF and ACI, significant improvement in VAS, Lysholm, and SF-36 for patients who did not have failure	32.5
Solheim et al. ⁴⁵ (2018)	RCT (I)	20	16 yr (15-17 yr)	3.5 (2.0-5.0)	Lysholm (preop. and at 1, 5, 10, and 15 yr)	Mosaicplasty superior to MF	15
Dasar et al. ¹⁰⁷ (2016)	Cohort study (III)	20	22.5 ± 4.4 mo	3.5 ± 0.9	Lysholm, Modified Cincinnati, and MOCART	MF superior to carbon fiber rod implantation	NR
Mithoefer et al. ¹⁰⁸ (2016)	Cohort study (III)	84	23.9 mo (6-81 mo)	1.9 ± 1.7	KOOS	No difference in KOOS based on grade of osseous overgrowth after MF	16.7
Solheim et al. ¹⁰⁹ (2017)	Cohort study (III)	52	16 yr (15-17 yr)	3.4 ± 1.0	Lysholm	Mosaicplasty superior to MF	9.6
Solheim et al. ⁴⁶ (2020)	Cohort study (III)	119	Survival analysis with min. 15-yr follow-up	480 ± 290 mm ²	Lysholm score of <65 or undergoing an ipsilateral knee replacement	MF articular cartilage repairs failed more often and earlier than the OAT repairs	66
Solheim et al. ¹¹⁰ (2016)	Case series (IV)	110	12 yr (10-14 yr)	4.0 (1-15)	Lysholm score, VAS function, and VAS pain	Significant improvement in all scores; full return to normal function not achieved	6.36
Steadman et al. ¹¹¹ (2015)	Case series (IV)	26	5.8 yr (2.0-13.3 yr)	1.8 (0.1-4.0) for MFC, 1.9 (0.3-6.0) for LFC, and 2.1 (0.1-5.7) for PAT/TRO	Lysholm, Tegner, and satisfaction	MF improved function and satisfaction in adolescents with full-thickness lesions	3.8

*RCT = randomized controlled trial, KOOS = Knee injury and Osteoarthritis Outcome Score, SF-12 = Short Form-12, MF = microfracture, MACI = matrix-assisted chondrocyte implantation, ACI = autologous chondrocyte implantation, VAS = visual analog scale, MOCART = magnetic resonance observation of cartilage repair tissue, NR = not reported, OAT = osteochondral autograft transfer, MFC = medial femoral condyle, LFC = lateral femoral condyle, PAT = patella, and TRO = trochlea. †The data are given as the mean and the standard deviation or as the mean with the range in parentheses.

stabilization of symptoms³. However, surgery is often indicated, especially in young, active patients with a symptomatic, full-thickness chondral lesion.

There are 4 main types of surgical procedures to consider for isolated chondral lesions in the knee: (1) chondroplasty; (2) marrow stimulation; (3) osteochondral restoration, including osteochondral autograft transfer (OAT) and osteochondral allograft transfer (OCA); and (4) cell-based repair such as autologous chondrocyte implantation (ACI) or matrix-assisted

ACI (MACI). To apply patient-specific treatment strategies utilizing these procedures, an understanding of chondral knee biology coupled with evidence-based surgical techniques is necessary. As technology, graft sources, and improved surgical techniques evolve, there are many strategies to address injuries of the femoral condyles and patellofemoral articular cartilage. This review provides a critical analysis of the current, relevant literature regarding surgical treatment for both isolated femoral condylar defects and patellofemoral chondral defects of the



Fig. 1
With the patient in a lateral decubitus position, bone marrow aspirate for concentration is harvested from the posterior superior iliac spine in between the inner and outer tables of the iliac crest. The BMC can be later used to augment chondral procedures.

knee to provide an updated evidenced-based algorithmic treatment approach.

Marrow Stimulation

Marrow stimulation encompasses techniques with the objective of creating a healing response at the site of a cartilage defect through penetration of the subchondral plate. Mechanistically, this creates a conduit between the bone marrow and the injured cartilage surface allowing cellular elements access to the defect. Development of the technique was proposed in the 1980s using an awl, which became known as “microfracture.”²⁴ The popularity of the technique grew because of the low cost, perceived lower morbidity, and initial results as a primary cartilage procedure, especially in young and active patients⁵⁻⁷. Contemporary views on marrow stimulation are mixed because of recent comparative studies with other repair technologies (Table I). Concerns with this procedure persist as the fibrocartilage (type-I collagen) that fills the defect is structurally weaker and insufficient compared with that of native hyaline cartilage (type-II collagen)⁸. A recent systematic review of the long-term outcomes of contemporary marrow stimulation techniques included 18 studies and 1,830 defects; failure rates were reported to range from 11% to 27% within 5 years and from 6% to 32% at 10 years⁹. Regardless of the mixed clinical results, marrow stimulation remains the most frequently performed cartilage repair procedure in the United States⁹.

Marrow stimulation techniques have become refined with the addition of cellular augmentation to optimize the biologic environment for healing. Animal studies have suggested that smaller and deeper subchondral bone stimulation produces

TABLE II Summary of Clinical Decision-Making for Marrow Stimulation

Indications	Contraindications		Advantages	Disadvantages	Recommendations	Grade of Recommendation*
	Absolute	Relative				
Lesions <2 cm ² in size, Outerbridge grade-III/IV cartilage, and lack of subchondral involvement in an active patient; and lesions confined to the femoral condyles	Infections, poor surgical candidate, inability to follow postop. rehab. protocols, end-stage osteoarthritis, or lesions of ≥2 cm ²	Smoking and/or steroid use, lower-extremity malalignment, ligamentous instability, body mass index >35 kg/m ² , or meniscal insufficiency	Low cost, arthroscopic technique, technically easy, and fast	Predominantly fibrocartilage fill, questionable long-term outcomes, and long rehabilitation time	Drilling is the preferred technique to limit damage to the subchondral plate ¹² ; smaller perforations closer together can maximize defect fill; augmentation with BMC or mobilized peripheral blood can optimize the healing environment ²⁶⁻³²	B

*According to Wright^{11,2}, grade A indicates good evidence (Level-I studies with consistent findings) for or against recommending intervention; grade B, fair evidence (Level-II or III studies with consistent findings) for or against recommending intervention; grade C, poor-quality evidence (Level-IV or V studies with consistent findings) for or against recommending intervention; and grade I, insufficient or conflicting evidence not allowing a recommendation for or against intervention.

TABLE III Summary of OAT Studies within the Previous 6 Years*

Study	Study Design (Level of Evidence)	Sample Size (no. of patients)	Duration of Follow-up† (yr)	Mean Lesion Size‡	Primary Outcome Evaluated	Results	Failure Rate
Solheim et al. ⁴⁵ (2018)	RCT (I)	40 (20 MF vs. 20 OAT)	16 (15-17)	3.6 cm ² (2-5 cm ²) of femoral condyles	Lysholm (preop. and at 1, 5, 10, and 15 yr)	At short, medium, and long term (min., 15 yr), mosaicplasty results in a better, clinically relevant outcome than MF in articular cartilage defects (2-5 cm ²) of the distal end of femur	25% at >15 yr of follow-up (1 knee replacement and 3 with poor clinical outcomes)
Solheim et al. ⁴⁶ (2020)	Comparative cohort study (III)	203 (119 MF vs. 84 OAT)	Survival analysis with min. 15-yr follow-up	300 ± 110 mm ² OAT	Lysholm score <65 or having ipsilateral knee replacement	Long-term failure rate (62% overall) was significantly higher in the MF group (66%) than the OAT group (51%)	Time to failure (mean and SD) significantly shorter in the MF group (4.0 ± 4.1 yr) than the OAT group (8.4 yr)
Matsuura et al. ⁵² (2019)	Case series (IV)	86 adolescents	7.2 (2.3-15.4)		IKDC and rate of return to sport, DSM (persistent symptoms for >1 yr or need for subsequent intervention), and stricter DSM criteria§	2.3% DSM with usual criterion and 12.8% with strict criterion	
Anil and Strauss ⁴⁹ (2018)	Case report (V)	1	1	1.2 cm ²	Mechanical symptoms	Mechanical symptoms with walking at 8 wk with resolution of symptoms after revision of back-fill of donor sites at 1-yr follow-up	0% (100% returned to same level of sport)
Werner et al. ⁴⁷ (2017)	Case Series (IV)	20	4.4 ± 1.7	1.34 (0.15-2.8)	Time to return to sport; IKDC; and Tegner	Return to sport at mean of 82.9 days (range, 39-134 days), final IKDC (mean and SD) of 84.5 ± 9.5, and final Tegner of 7.7 ± 1.9	

*RCT = randomized controlled trial, MF = microfracture, OAT = osteochondral autograft transfer, IKDC = International Knee Documentation Committee, SD = standard deviation, and DSM = donor-site morbidity. †The values are given as the mean with the range in parentheses or the mean and the standard deviation. ‡The values are given as the mean and the standard deviation, the mean with the range in parentheses, or only the mean. §Stricter DSM criteria include any symptoms, such as effusion, patellofemoral complaints, crepitation, unspecified disturbance, stiffness, pain and/or instability during activities, and osteoarthritic change.

TABLE IV Summary of Clinical Decision-Making for OAT*

Indications	Contraindications		Advantages	Disadvantages	Recommendations	Grade of Recommendation†
	Absolute	Relative				
1st line treatment for defects of <2 cm ² with grade-III or IV Outerbridge cartilage and subchondral involvement in young, active patients; and lesions confined to the femoral condyles	Infections, poor surgical candidate, inability to follow postop. rehab. protocols, end-stage osteoarthritis, and lesions of ≥2 cm ²	Smoking and/or steroid use, lower-extremity malalignment, ligamentous instability, BMI of >35 kg/m ² , and meniscal insufficiency	Fast graft incorporation allowing for early rehab., greater durability of repair than MF, direct replacement of hyaline cartilage, and low comparative cost	DSM requiring secondary operation, difficult operative learning curve, and greatest benefit seen in condylar lesions	If time is a factor for return to livelihood (professional athlete, deploying soldier, etc.), consideration for the utilization of autograft should be given due to fast incorporation and early return to activities compared with alternative cartilage restorative techniques	B
*BMI = body mass index, MF = microfracture, and DSM = donor-site morbidity. †According to Wright ¹¹² , grade B indicates fair evidence (Level-II or III studies with consistent findings) for or against recommending intervention.						

improved fibrocartilage fill and tissue quality¹⁰⁻¹². Augmentation of marrow stimulation has focused on cells with the ability to reproduce and differentiate, which are often called *stem cells*. A recent systematic review of emerging studies on cartilage repair involving stem cells found 60 clinical studies, including 9 case reports, 31 case series, 13 comparative trials, and 7 randomized controlled trials¹³. Overall, cell-based augmented treatments for cartilage repair have been safe and effective in short-term evaluation yet require further well-designed comparative studies and long-term evaluation.

Marrow stimulation may be augmented with concentrated bone marrow aspirate (BMC) or mobilized peripheral blood stem cells (Fig. 1). Clinical researchers have pioneered direct surgical

implantation of BMC predominantly involving a hyaluronic acid matrix¹⁴⁻²⁵. Development started in 2009 with a prospective clinical study of BMC in the treatment of talar osteochondral lesions and continued with a prospective knee study comparing BMC with MACI in the treatment of large patellofemoral chondral defects^{23,26}. In the comparative knee study, both groups had significant improvement in the clinical scores, with no significant difference between the groups, with the exception of the International Knee Documentation Committee (IKDC) subjective score, which was better in the BMC group²⁶. Subtle superiority was observed in the BMC group, including less deterioration compared with the MACI group from the 2-year to the final follow-up evaluation (at an average of 59.7 months for the MACI group and

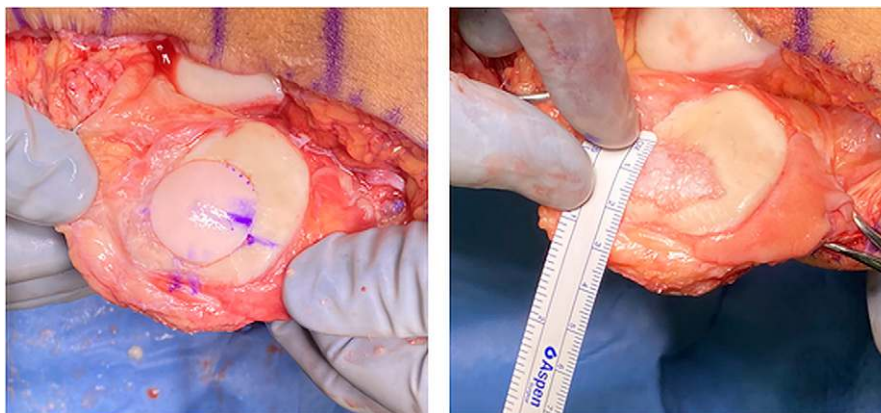


Fig. 2
Large size-matched osteochondral allograft implantation for isolated patellar osteochondral defects.

TABLE V Summary of OCA Studies within the Previous 6 Years*

Study	Study Design (Level of Evidence)	Sample Size	Duration of Follow-up†	Lesion Size‡ (cm ²)	Primary Outcome Evaluated	Results	Failure Rate
Tirico et al. ⁶¹ (2019)	Case control (III)	371 patients (396 knees) had primary OCA	5.5 yr (0.8-18.4 yr)	Median, 6.9 (1.8-50)	IKDC, KOOS, and satisfaction	Satisfaction rate of 88.1%, which was constant over time	NR
Gracitelli et al. ⁶³ (2015)	Cohort study (III)	46 knees had primary OCA and 46 had revision OCA; matched for age, graft size, diagnosis, BMI, and graft location	9.7 yr (1.8-30.1 yr)	8.2 ± 3.6 for primary OCA and 8.0 ± 3.2 for revision OCA	Merle d'Aubigné-Postel, IKDC, KS-F, satisfaction, and range of motion	24% reop. rate and satisfaction of 87% for primary OCA; 44% reop. rate and satisfaction of 97% for revision OCA; survivorship of 87.4% at 10 yr for primary versus 86% after marrow stimulation	11% for primary OCA and 15% for revision OCA
Riff et al. ⁶⁴ (2020)	Cohort study (III)	359 patients (92 had secondary ACI; 100, primary ACI; 88, secondary OCA; and 79, primary OCA)	43.5 ± 20.9 mo for primary OCA; 44.4 ± 27.3 mo for secondary OCA; 43.5 ± 20.9 mo for primary ACI; and 47.3 ± 23.6 mo for secondary ACI	4.96 for primary OCA, 3.96 for secondary OCA, 4.02 for primary ACI, and 4.17 for secondary ACI	Tegner, Lysholm, IKDC, KOOS, and SF-12	No difference between primary and secondary groups with regard to postop. functional scores, subjective satisfaction, reop. rate, and clinical failure rate	15% for primary OCA, 9% for secondary OCA, 8% for primary ACI, and 19% for secondary ACI
Tirico et al. ⁶⁰ (2018)	Cohort study (III)	143 patients	6.0 yr (1.9-16.5 yr)	6.4 (2.3-11.5) (femoral lesions)	IKDC and satisfaction	Satisfaction rate was 89.8%; change in IKDC scores (from preop. to latest follow-up) was greater for knees with large lesions than for knees with small lesions	5.8%; overall survivorship of graft was 97.2% at 5 yr and 93.5% at 10 yr
Cameron et al. ⁵⁷ (2016)	Case series (IV)	28 patients	7.0 yr (2.1-19.9 yr)	6.1 (2.3-20.0) (trochlear lesions)	Merle d'Aubigné-Postel, IKDC, KS-F, UCLA, and satisfaction	Mean Merle d'Aubigné-Postel score improved from 13.0 to 16.1; mean KS-F score, from 65.6 to 85.2; and mean IKDC total score, from 38.5 to 71.9; mean UCLA score was 7.9 postop.; and 89% were extremely satisfied or satisfied with the outcome	Graft survivorship was 100% at 5 yr and 91.7% at 10 yr
Gracitelli et al. ⁶⁷ (2015)	Case series (IV)	27 patients (28 knees)	9.7 yr (1.8-30.1 yr)	10.1 (4.0-18.0) (patellar lesions)	Merle d'Aubigné-Postel, IKDC, and KS-F	Patellar allografting survivorship was 78.1% at 5 and 10 yr and 55.8% at 15 yr; 17 (60.7%) of 28 knees had further surgery; 89% of patients were extremely satisfied or satisfied	8 (28.6%) of 28 knees

continued

TABLE V (continued)

Study	Study Design (Level of Evidence)	Sample Size	Duration of Follow-up†	Lesion Size‡ (cm ²)	Primary Outcome Evaluated	Results	Failure Rate
Tírico et al. ⁶⁸ (2019)	Case series (IV)	143 patients	6.7 yr (1.9-16.5 yr)	6.3 (2.3-13.0) (allograft area and 6.5-mm thickness)	IKDC, KOOS, and satisfaction	Satisfaction rate of 89%; IKDC pain and function scores improved significantly at latest follow-up; KOOS scores for symptoms, pain, ADL, sports and recreational activities, and QOL improved significantly	8%; 26% had further surgery; survivorship of allograft was 95.6% at 5 yr and 91.2% at 10 yr
Davey et al. ⁶² (2019)	Case series (IV)	9 patients had revision OCA	4.5 ± 3.2 yr	4.0 (IQR = 0)	VAS, IKDC, KOOS, Lysholm, SF-12, and Kellgren and Lawrence scale	89% graft survivorship rate with no significant changes in radiographic progression of arthritis at 4.5 yr	11%; 50% reop. rate
Wang et al. ¹¹³ (2018)	Case series (IV)	43 patients	3.5 yr (2.0 to 7.5 yr)	4.2 (1.2 to 7.1)	SF-36, KOS-ADL, IKDC Subjective Knee Score, and Cincinnati Overall Symptom Assessment	Worse clinical outcomes for those with BMI of >30 kg/m ² ; significant improvements (p < 0.05) in SF-36 Physical Function, SF-36 Pain, KOS-ADL, IKDC Subjective Knee Score, and Cincinnati Overall Symptom Assessment	9%; 40% reop. rate

*OCA = osteochondral allograft transfer, IKDC = International Knee Documentation Committee, KOOS = Knee injury and Osteoarthritis Outcome Score, NR = not reported, BMI = body mass index, KS-F = Knee Society-Function, ACI = autologous chondrocyte implantation, SF-12 = Short Form-12, UCLA = University of California Los Angeles, KOS = Knee Outcome Score, ADL = activities of daily living, QOL = quality of life, IQR = interquartile range, and VAS = visual analog scale. †The values are given as the mean, with the range in parentheses, unless otherwise indicated. ‡The values are given as the mean, with the range in parentheses, or as the mean and the standard deviation.

54.2 months for the BMC group), with both the MACI and BMC techniques showing similarly complete filling of cartilage defects (76% versus 81%, respectively). Another developing

technique involves the application of mobilized autologous peripheral blood stem cells, leveraging the same stem cell source that is used in bone marrow transplantation²⁷⁻³². After 3 days of

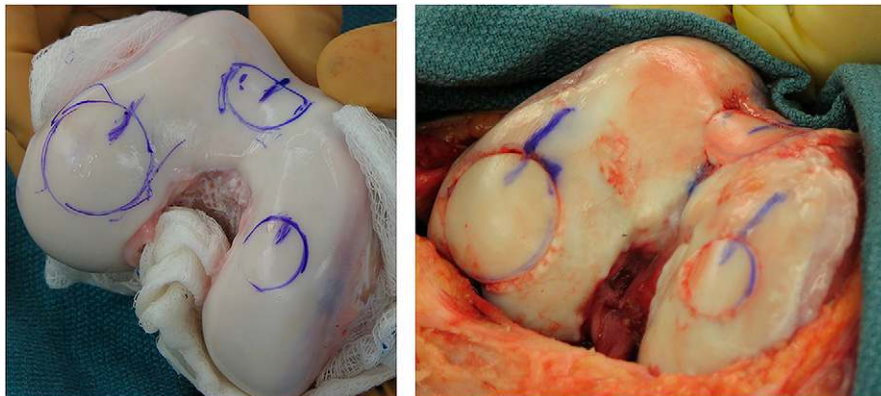


Fig. 3
Multifocal osteochondral allograft implantation with corresponding grafts taken from a size-matched donor.

TABLE VI Summary of Clinical Decision-Making for OCA

Indications	Contraindications		Advantages	Disadvantages	Recommendations	Grade of Recommendation†
	Absolute	Relative*				
1st line treatment for defects of ≥ 2 cm ² with grade III or IV Outerbridge cartilage; 1st line treatment for lesions with subchondral involvement; and osteonecrosis	Infections, poor surgical candidate, inability to follow postop. rehab. protocols, and end-stage osteoarthritis	Smoking and/or steroid use, lower-extremity malalignment, ligamentous instability, BMI of >35 kg/m ² , and meniscal insufficiency	Versatile method that can be used anywhere in the knee, defects do not need to be contained, outcomes not affected by prior procedure, and can treat large chondral lesions	Graft availability, revision options limited, high secondary reop. rate, cost, difficult operative learning curve, and long recovery period to allow for complete radiographic graft incorporation	Can be used in both primary and revision cartilage restoration procedures with reliable results of both chondral and osteochondral lesions; BMC can be used as adjuvant ⁵⁴ ; and return to high-level impact activities and sporting events should be withheld for at least 1 yr	B
*Relative contraindications according to Cavendish et al. ⁵⁴ . BMI = body mass index. †According to Wright ¹¹² , grade B indicates fair evidence (Level-II or III studies with consistent findings) for or against recommending intervention.						

dosing with filgrastim (a bone marrow stimulant), peripheral blood stem cells are harvested from the peripheral circulation by apheresis, a blood collection process developed for bone marrow transplantation. This produces a large yield of stem cells, which can be aliquoted and cryopreserved. The results are promising, including the potential to heal large chondral defects, with histological samples suggesting a cartilage repair more consistent with hyaline cartilage as opposed to fibrocartilage^{27,29,31-35}. Multicenter comparative studies are needed to ultimately determine how emerging stem-cell cartilage technologies perform in contrast to established techniques (Table II).

Osteochondral Autograft Transfer

OAT utilizes grafts that are taken from lesser-weight-bearing portions of the knee and transferred to more weight-bearing

portions of the knee³⁶. Because of the use of autograft, osseous integration is faster and more reliable than osteochondral allograft and has the advantage of transferring hyaline cartilage. Ideal candidates are young, healthy, and active and have lesions that are ≤ 3 cm² in size³⁷. Results are more consistently reproduced when lesions are confined to the femoral condyles; however, although less studied, trochlear and patellar cartilage-based OATs have shown durable improvement in outcomes³⁸⁻⁴².

OAT has most often been compared with either the use of microfracture or ACI, without direct comparison with OCA. When ranking cartilage restoration procedures, Riboh et al. performed a meta-analysis that found OAT most consistently reproduced hyaline-like tissue at the recipient site compared with ACI and microfracture^{41,43}. In addition, OAT

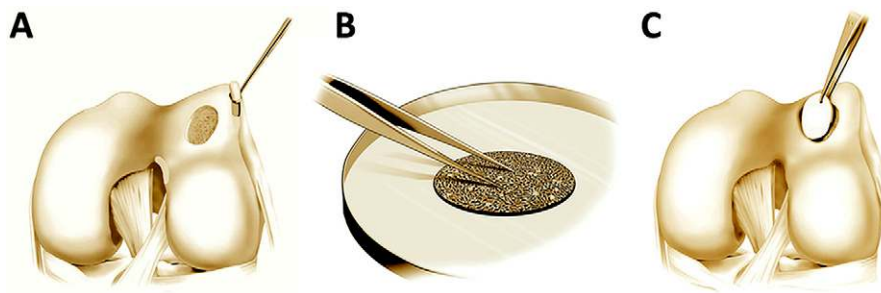


Fig. 4

Figs. 4-A, 4-B, and 4-C Drawings of the 2-stage process of MACI. **Fig. 4-A** A biopsy of the lesser-weight-bearing region of the knee is obtained.

Fig. 4-B The chondrocytes are cultured and grown with implantation into a collagen-based matrix. **Fig. 4-C** Reimplantation of the chondrocytes into the knee.

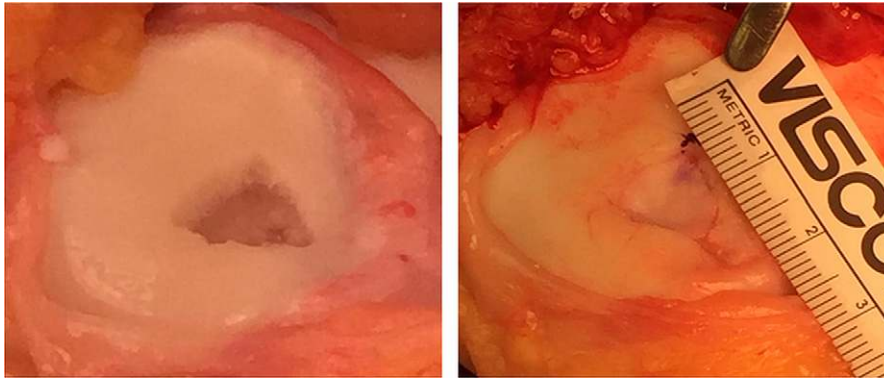


Fig. 5
MACI used for focal cartilage defects of the patella.

demonstrated a lower reoperation rate than microfracture at both 5 and 10 years postoperatively. OAT has been reported to offer durable results with maintenance of clinical benefits at >10 years of follow-up. In a large systematic review, Jones et al. found that minimal clinically important difference (MCID) values for IKDC, Lysholm, and visual analog scale for pain (VAS pain) scores were maintained for >10 years, demonstrating the durability of this surgical technique when patients are selected carefully⁴⁴. Solheim et al. reported significantly higher Lysholm scores in a Level-I randomized controlled trial comparing OAT and microfracture at a minimum 15-year follow-up⁴⁵. A separate retrospective cohort survival analysis found that the OAT cohort had greater durability than microfracture (8.4 versus 4.0 years)⁴⁶. A purported benefit of OAT is the ability to have accelerated rehabilitation because of early graft integration and early weight-bearing. Werner et al. reported an average return to the same level of sport and activity at <3 months with use of OAT, which was significantly less than other cartilage replacement strategies⁴⁷ (Table III).

There are limitations to the use of autograft as a source, with size being a principal one, because lesions of >3 cm² are at risk of having symptomatic donor-site morbidity, pain, and symptoms³⁷. Garretson et al. performed a biomechanical study that demonstrated that the optimum harvest site was just proximal to the medial sulcus terminalis followed by the lateral aspect of the trochlea because these locations have the lowest contact pressures⁴⁸. Regardless, cases of patients who had early mechanical symptoms secondary to donor-site morbidity have been reported, with recommendations for back-filling with osteochondral allograft plugs to reduce pain and mechanical symptoms^{49,50}. The rate of donor-site morbidity has been reported to range from 2.3% to 12.6%⁵¹⁻⁵³, with the most common symptoms being patellofemoral disturbances and crepitation (Table IV).

Osteochondral Allograft Transplantation

OCA is typically used in young and active patients with focal defects ≥ 2 cm² in size^{54,55}. Historical limitations of OCA include varied graft cost, graft availability, and, although at an extraordinarily low rate,

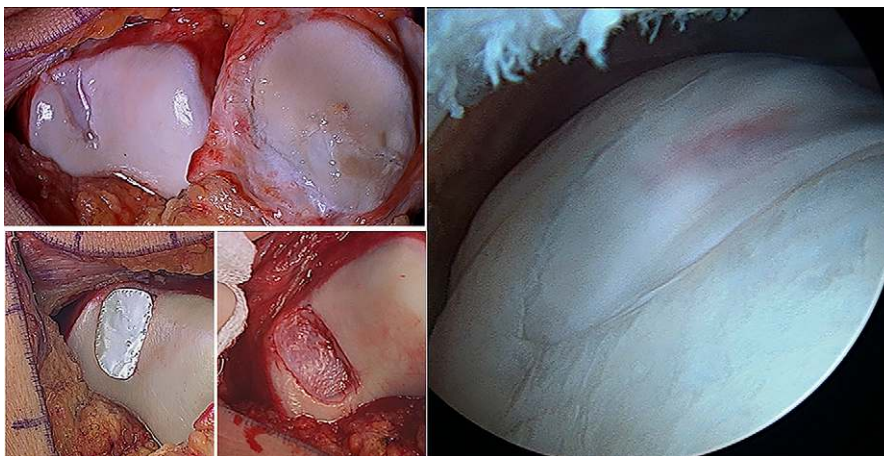


Fig. 6
A trochlear defect treated with MACI. (Photographs are courtesy of Alison P. Toth, Duke University Orthopaedics.) Corresponding defects are identified (top left), foil is used to appropriately size the MACI graft (bottom left), the MACI graft is implanted (bottom center), and second-look arthroscopy shows the healed articular surface (right).

TABLE VII Summary of MACI Studies within the Previous 6 Years*

Study	Study Design (Level of Evidence)	Sample Size (no. of patients)	Duration of Follow-up†	Lesion Size‡ (cm ²)	Primary Outcome Evaluated	Culture Time and Matrix Scaffold	Failure Rate
Brittberg et al. ¹⁰⁵ (2018)	RCT (I)	65	5 yr	5.1 ± 3 cm ²	KOOS pain and function	Seeded at a density of ≥500,000 cells/cm ² and ≤1 million cells/cm ²	1.5% (n = 1)
Hoburg et al. ¹¹⁴ (2019)	Cohort study (III)	71 (29 adolescents and 42 young adults)	63.3 mo (3.5-8.0 yr) for adolescents and 48.4 mo (3.8 to 4.3 yr) for young adults	4.6 ± 2.4 in adolescents and 4.7 ± 1.2 in young adults	KOOS, IKDC, Lysholm, MOCART, and time to treatment failure	NR	3% (n = 1) for adolescents and 5% (n = 2) for young adults
Müller et al. ⁸⁴ (2020)	Cohort study (III)	20 without previous BMS and 20 with previous BMS	6, 12, 24, and 36 mo	5.40 ± 2.6 (2-15) in Group 1 and 4.82 ± 2.0 (2-10) in Group 2	IKDC and VAS	Cultivation time was approx. 3-4 wk; seeded on a collagen type-I/III biphasic scaffold	0% for Group 1 and 30% (n = 6) for Group 2
Ebert et al. ⁸⁰ (2017)	Case series (IV)	31	1, 2, 3, 6, 12, and 24 mo	2.52 (1.00-5.00)	KOOS, Lysholm, Tegner, VAS, SF-36 Health Survey, active knee motion, 6-min. walk test, and limb symmetry indices	Cultured for approximately 4 to 8 wk; seeded onto a type-I/III collagen membrane	6.5% (n = 2)
Gille et al. ¹¹⁵ (2016)	Case series (IV)	38	16 yr (15-17 yr)	3.6 (1.5-8.75)	Lysholm, IKDC, and Tegner	Cultured for 4 wk; seeded (approx. 1 million cells/cm ²) on rough side of porcine collagen type-I/III matrix	0%
Kon et al. ¹¹⁶ (2016)	Case series (IV)	32	2, 5, and 10 yr	4.45 ± 2.1	IKDC, VAS, and Tegner	Hyalograft C	12.5% (n = 4)

*RCT = randomized controlled trial, KOOS = Knee injury and Osteoarthritis Outcome Score, IKDC = International Knee Documentation Committee, MOCART = magnetic resonance observation of cartilage, NR = not reported, BMS = bone marrow stimulation, SF-36 = Short Form-36, and VAS = visual analog scale for pain. †The values are given as the mean, with the range in parentheses, or as the mean and the standard deviation.

disease transmission^{54,55}. The reported overall failure rate (defined as graft removal or conversion to arthroplasty) has been reported to range from 8% to 50% when lesions treated throughout all areas of the knee are included^{2,54-59}. However, recent studies have demonstrated improvement in survivorship and sustained patient satisfaction for up to 15 and 20 years⁵⁹⁻⁶¹. Davey et al. demonstrated that, in patients who had repeat revision of OCA and a mean follow-up of 4.5 years, the failure rate was 11% (1 of 9 patients), demonstrating the efficacy of OCA even in difficult cartilage defects⁶².

Gracitelli et al. reported no difference in failure rates in a large cohort study, in which primary OCA (11%) and OCA after a marrow stimulation procedure (15%) were compared⁶³. Despite low failure rates, they found that 24% of patients in the primary group compared with 44% of patients in the secondary group required a secondary reoperation, such as an arthroscopic lysis of adhesions and chondroplasty. Additionally, 87% of patients in the primary group and 97% in the secondary group reported satisfaction at a minimum follow-up of 2 years⁶³.

TABLE VIII Summary of Clinical Decision-Making for MACI*

Indications	Contraindications		Advantages	Disadvantages	Recommendations	Grade of Recommendation†
	Absolute‡	Relative				
1st line treatment for defects of ≥ 2 cm ² with grade III/IV Outerbridge cartilage ^{81,84} 2nd line treatment for lesions ≤ 2 cm ² in size ⁸¹	Infections, inflammatory arthritis, inability to follow postop. rehab. protocols, and end-stage osteoarthritis	Uncontained and bipolar tibiofemoral lesions, lower-extremity malalignment, ligamentous instability, patellofemoral instability and/or maltracking, and meniscal insufficiency	Elastic membrane can conform to variously shaped defects; consistency of cellular implant makeup and method of application; and can treat large chondral lesions	2-stage procedure; ex vivo cell expansion; cost; and invasive (mini-arthrotomy required)	MACI should be used as 1st-line therapy for lesions >2 cm ² in size ^{70,72} because of the additional cost and the invasive nature of MACI, this technique may not be suitable for patients with smaller defects, and other options should be considered in defects <2 cm ² in size ^{73,81,85-87}	B

*MACI = matrix-assisted autologous chondrocyte implantation. †Absolute contraindications according to Hinckel and Gomoll⁸¹. ‡According to Wright¹¹², grade B indicates fair evidence (Level-II or III studies with consistent findings) for or against recommending intervention.

OCA and ACI have been the most common methods used to address large lesions after failed marrow stimulation. Riff et al. found no difference in outcomes when primary OCA and ACI were compared in the treatment of large lesions or in revision cases⁶⁴. Furthermore, there was no difference between the groups with respect to functional outcome scores, subjective satisfaction, reoperation rates, and clinical failures. While the cost of OCA can be concerning, it has been reported to be a highly cost-effective treatment modality when accounting for quality-adjusted life years⁶⁵.

The patellofemoral joint (PFJ) has been reported to have chondral defects in approximately 33% of knees undergoing arthroscopy². Multiple recent systematic reviews^{2,53,55,59,66} have demonstrated sustained improvement in outcome scores, durable graft survivorship (13% to 16% failure rate at 5 years), and increased patient satisfaction when OCA was used in the treatment of PFJ defects (Fig. 2). Because of the difficult biomechanics of this joint, resulting from the increased shear forces and strain across the joint, reliable outcomes with cartilage restoration procedures are particularly difficult to achieve. However, Gracitelli et al. demonstrated that isolated patellar defects treated by OCA have a survivorship of 78.1% at 10 years and 55.8% at 15 years of follow-up⁶⁷. Cameron et al. showed overall increased survivorship when isolated trochlear defects were treated, with 100% survivorship at 5 years and 91.7% at 10 years of follow-up⁵⁷ (Table V).

Technically, Tirico et al. described a modified OCA technique utilizing thin plugs, with an average thickness of 6.3 mm, in 187 patients (200 knees) at a mean follow-up of 6.7 years⁶⁸.

The purported benefits of this technique allow for reliable clinical outcomes (8% rate of failure and 89% rate of satisfaction at 10 years of follow-up) without increasing compromise of the subchondral bone. Although BMC is often utilized to aid in graft integration and chondral growth⁵⁵, Wang et al. found no increase in osseous integration, decreased cystic changes, or other bone, cartilage, and ancillary feature changes based on magnetic resonance imaging (MRI) features of the Osteochondral Allograft MRI Scoring System⁶⁹ (Fig. 3, Table VI).

Cell-Based Articular Cartilage Restoration Techniques

ACI is a 2-stage procedure for treating large full-thickness cartilage defects⁷⁰. At its most fundamental level, the procedure consists of a diagnostic arthroscopy for measurement of the cartilage defect and biopsy of lesser-weight-bearing articular surfaces of the knee. The harvested chondrocytes are then cultured ex vivo and implanted back into the knee during the second stage⁷⁰⁻⁷³. A depiction of this procedure can be seen in Figure 4. Initially, the original ACI techniques consisted of injecting the cultured cells under a periosteal patch or a collagen membrane^{1,74,75}. However, periosteal patch hypertrophy, high reoperation rates for debridement, bulky sutures, and cell leakage negatively contributed to the overall outcomes of the ACI procedure compared with more traditional OCA and bone marrow stimulation (BMS) techniques⁷⁶⁻⁷⁹. These issues prompted the development of a third-generation MACI technique^{79,80}. The MACI technique differs from its predecessors in that it involves culturing the harvested chondrocytes for 3 to 4 weeks and directly seeding the cells into a type-I/III collagen

TABLE IX Summary of PJAC Studies within the Previous 6 Years*

Study	Study Design (Level of Evidence)	Sample Size	Mean Duration of Follow-up	Mean Lesion Size† (cm^2)	Primary Outcome Evaluated	Outcome	Failure Rate
Wang et al. ⁹⁵ (2018)	Case series (IV)	27 patients (30 knees with patellofemoral defects)	3.8 yr	2.14 ± 1.23	MRI, KOOS, IKDC, KOOS-ADL, and Marx	69% lesion fill on MRI, morphologic differences persist; improved IKDC and KOS-ADL; and no change in Marx	0%
Grawe et al. ⁹⁴ (2017)	Case series (IV)	45 patients	6, 12, and 24 mo	2.1 ± 1.2 (0.4-5)	MRI cartilage fill	85% of patients at 12 mo displayed good to moderate fill of the graft; at 24 mo, patient age demonstrated negative correlation with mean T2 relaxation times of the deep and superficial graft	2% (n = 1)

*PJAC = particulated juvenile allograft cartilage, MRI = magnetic resonance imaging, KOOS = Knee injury and Osteoarthritis Outcome Score, IKDC = International Knee Documentation Committee, and KOS-ADL = Knee Outcome Survey-Activities of Daily Living. †The values are given as the mean and the standard deviation, with the range in parentheses.

scaffold matrix, which is subsequently fixated into the chondral defect with fibrin glue^{74,75,80-83} (Figs. 5 and 6).

In a recent systematic review, Schuette et al. reported that MACI significantly improved the Knee injury and Osteoarthritis Outcome Score (KOOS), Short Form-36 (SF-36), and Tegner scores from baseline for both tibiofemoral and patellofemoral defects⁷⁵. Overall, there was a 9.7% treatment failure rate, with a significantly higher failure rate in the 442 patients with tibiofemoral defects compared with the group of 136 patients with patellofemoral defects⁷⁵.

Regarding the use of MACI after failure of primary BMS, Müller et al. reported that MACI improved IKDC and VAS scores in both patients treated with and those treated without primary BMS⁸⁴. However, the authors noted that patients with primary BMS had significantly worse outcomes and higher failure rates because of compromise of the subchondral plate⁸⁴, which was consistent with the findings of previous studies investigating the use of ACI as second-line therapy for large lesions^{63,73,85-87} (Table VII).

It has also been recommended that MACI should be used as a first-line therapy for lesions ≥ 2 cm^2 in size^{70,72}. A randomized controlled trial evaluating 5-year outcomes of MACI and microfracture techniques demonstrated that MACI yielded significantly higher KOOS pain and function scores and a nonsignificantly lower failure rate⁷⁰. However, the efficacy of MACI over microfracture has yet to be established in defects < 2 cm^2 in size^{74,88,89}, and future studies are needed to definitively determine the value of MACI over OCA for larger cartilage defects⁷² (Table VIII).

Particulated Juvenile Allograft Cartilage

Particulated juvenile allograft cartilage (PJAC) (DeNovo Natural Tissue [NT]; Zimmer Biomet) represents a second-generation cartilage treatment due to its off-the-shelf capability and limited immunogenic response. This system consists of minced live cartilage allograft from juvenile donors that contains chondrocytes within their native extracellular matrix, conveying a theoretically increased proliferative potential. The minced cartilage utilizes 1 to 2-mm cubes, allowing chondrocytes to diffuse from their extracellular matrix to form new hyaline-like cartilage⁹⁰. Because PJAC does not require a biopsy, this can be performed as a single-stage procedure. Despite these benefits, the graft remains expensive and is still seen as experimental by various insurance companies; thus, consideration of its use must be made on a case-by-case basis.

The technique requires preparing the surface by removing the calcified cartilage layer and establishing well-defined, stable borders around the defect followed by placement of the PJAC such that the fragments are spaced 1 to 2 mm apart. Each packet of PJAC covers an area 2.0 to 2.5 cm^2 in size⁷². The surface is then secured with a final layer of fibrin glue and should be recessed from the surrounding native cartilage by 1 mm to prevent graft dislodgement. Graft hypertrophy has been reported in up to 33% of cases, requiring revision arthroscopic debridement⁹¹. Graft displacement may occur if stable peripheral walls are not established, the graft is not recessed appropriately, or

TABLE X Summary of Clinical Decision-Making for PJAC*

Indications†	Contraindications		Advantages	Disadvantages	Recommendations	Grade of Recommendation‡
	Absolute	Relative				
Lesions of 2-6 cm ² with grade-III or IV Outerbridge changes; minimal to no bone loss or subchondral involvement; and 2nd-line treatment for lesions of <2 cm ²	Infections, inflammatory arthritis, inability to follow postop. rehab. protocols, and end-stage osteoarthritis	Uncontained and bipolar lesions, lower-extremity malalignment, ligamentous instability, PFJ instability and/or maltracking, and meniscal insufficiency	Single-stage procedure, consistency of cellular implant makeup and method of application, can treat large chondral lesions, and uncontained lesions can be covered in collagen type-I/III membranes ¹¹⁷	Concern for graft stability or dislodgement, graft hypertrophy, cost, invasive (mini-arthrotomy required), and depth of >6 mm requires bone-grafting ^{117,118}	PJAC can be used as 1st line therapy for lesions of ≥2 cm ² ; because of additional cost and invasive nature of PJAC, this technique may not be suitable for patients with defects of <2 cm ²	C

*PJAC = particulated juvenile allograft cartilage, PFJ = patellofemoral joint. †Indications are according to several studies^{93,95,119,120}. ‡According to Wright¹¹², grade C indicates poor-quality evidence (Level-IV or V studies with consistent findings) for or against recommending intervention.

intraoperative mobilization is initiated before the fibrin glue is sealed (Table IX).

As PJAC is a newer technique, mid-term and long-term clinical outcomes data are lacking, but early clinical outcomes studies have been promising. Buckwalter et al. noted improved outcome scores at short-term follow-up in a series of 17

patients⁹². Tompkins et al. observed similar favorable clinical outcomes after 28.8 months of follow-up, although patients did not return to the same level of activity⁹¹. Farr et al., in a prospective study, found that hyaline-like cartilage was predominant in follow-up biopsy specimens following PJAC⁹³. Grawe et al. observed moderate to good fill of cartilage

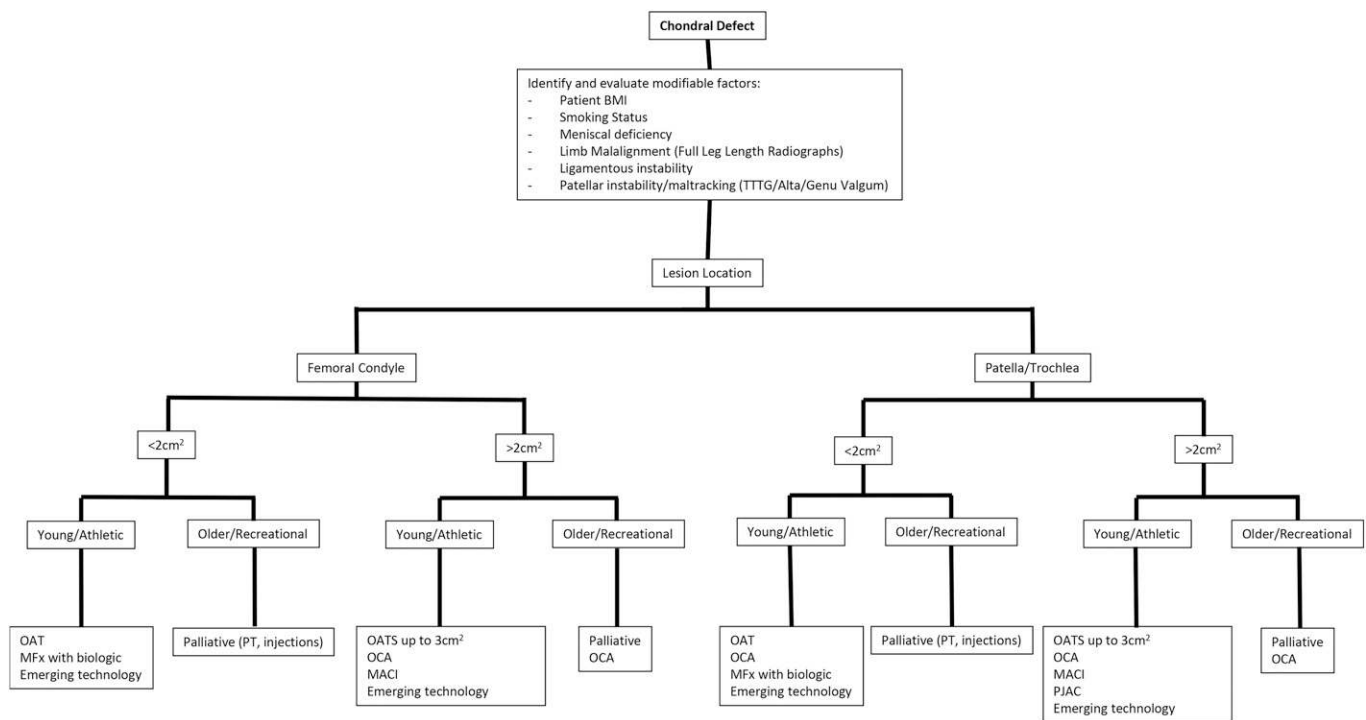


Fig. 7

Treatment algorithm for cartilage defects based on their location and size and the activity level of the patient¹⁰⁴. BMI = body mass index, TTTG = tibial tubercle-trochlear groove, MFx = microfracture, and PT = physical therapy.

repair tissue in 82%, 85%, and 75% of knees at 6, 12, and 24 months, respectively⁹⁴. Wang et al. demonstrated that 69% of the 27 patients (30 lesions) demonstrated lesion fill of >67%, with significantly improved IKDC and Knee Outcome Survey-Activities of Daily Living (KOS-ADL) scores but unchanged Marx Activity Scale scores⁹⁵. The overall correlation between cartilage repair evaluated radiographically and subjective outcomes measures has yet to be fully established. Although initial studies have demonstrated encouraging results, the quality of evidence to support the use of PJAC is currently limited (Table X).

Emerging Allograft Technology

New biologic scaffolds of allograft cartilage have been used to enhance the biologic response to microfracture for improved cartilage repair⁹⁶. Most of the evidence for their use is in preclinical studies with benchtop models demonstrating promising results⁹⁶⁻¹⁰⁰. BioCartilage (Arthrex) is desiccated micronized allograft cartilage extracellular matrix, which is hydrated with platelet-rich plasma (PRP) and placed in contained defects after microfracture¹⁰¹. The technique follows the principles of microfracture, ensuring removal of the calcified layers and creation of a well-contained lesion, and it is secured with a fibrin glue. Clinical outcomes following biologic scaffold augmentation are limited, but basic-science studies have shown an improved type-II collagen profile compared with microfracture. Fortier et al. evaluated BioCartilage versus microfracture alone in an equine model with two 10-mm defects using serial arthroscopic evaluation at 2, 6, and 13 months, as well as MRI and microcomputed tomography (micro-CT) at 13 months⁹⁷. The overall International Cartilage Repair Society score for defects was significantly better for BioCartilage than microfracture alone, and there were no adverse inflammatory reactions.

Cryopreserved OCA-equivalent implants are also available and include Cartiform (Arthrex) and ProChondrix CR (Stryker). These options deliver cryopreserved chondrocytes, chondrogenic growth factors, and extracellular matrix proteins on a thin layer of subchondral bone. After microfracture is performed, the graft is sized and placed into the defect with the osseous surface oriented toward the subchondral bone. Graft fixation has been described with the use of sutures to native cartilage, anchors, and fibrin glue¹⁰². The cryopreserved nature of the graft allows for increased shelf life and provides a single-stage surgical option for smaller (1 to 2 cm²), full-thickness, contained defects^{102,103}. Because of the small osseous layer and thin profile, these implants are contraindicated in the presence of subchondral bone loss of

>5 mm, mechanical malalignment, meniscal insufficiency, ligamentous instability, and patellar defects with maltracking. Early animal studies have shown healing of osteochondral defects and very limited case series have demonstrated the ability to generate cellular hyaline-like repair tissue and MRI evidence of graft incorporation^{98,100} (Fig. 7).

Overview

As technology, graft sources, and newer surgical techniques evolve, there are a multitude of strategies to address focal articular cartilage injuries of either the patellofemoral joint or femoral condyles in the young and active patient population. Patient selection is paramount, as the mechanical (varus, valgus, malrotation, malalignment, and meniscal deficiency), biologic (smoking status, inflammatory arthropathy, and increased body mass index), and mental environments (patient resilience and willingness to comply with restrictions) need to be accounted for to optimize patient outcomes. This review serves to provide a resource for the clinician in an ever-challenging and ever-evolving field. ■

MAJ Travis J. Dekker, MD, USAF, MC¹

Zachary S. Aman, MS, BA²

Nicholas N. DePhillipo, PhD, MS, ATC, CSCS³

LT COL

Jonathan F. Dickens, MD, USA, MC⁴

Adam W. Anz, MD⁵

Robert F. LaPrade, MD, PhD³

¹Division of Orthopaedics, Department of Surgery, Eglin Air Force Base, Eglin, Florida

²Sidney Kimmel Medical College, Thomas Jefferson University, Philadelphia, Pennsylvania

³Twin Cities Orthopedics, Minneapolis, Minnesota

⁴Division of Orthopaedics, Department of Surgery, Walter Reed National Military Medical Center, Bethesda, Maryland

⁵Andrews Research & Education Foundation, Gulf Breeze, Florida

Email address for T.J. Dekker: travisdekker88@gmail.com

ORCID iD for M.A.J.T.J. Dekker: [0000-0002-1792-8652](https://orcid.org/0000-0002-1792-8652)

ORCID iD for Z.S. Aman: [0000-0001-7035-5323](https://orcid.org/0000-0001-7035-5323)

ORCID iD for N.N. DePhillipo: [0000-0001-8946-4028](https://orcid.org/0000-0001-8946-4028)

ORCID iD for J.F. Dickens: [0000-0002-4189-0287](https://orcid.org/0000-0002-4189-0287)

ORCID iD for A.W. Anz: [0000-0002-8607-1939](https://orcid.org/0000-0002-8607-1939)

ORCID iD for R.F. LaPrade: [0000-0002-9823-2306](https://orcid.org/0000-0002-9823-2306)

References

1. Flanigan DC, Harris JD, Trinh TQ, Siston RA, Brophy RH. Prevalence of chondral defects in athletes' knees: a systematic review. *Med Sci Sports Exerc.* 2010 Oct; 42(10):1795-801.
2. Chahla J, Sweet MC, Okoroha KR, Nwachukwu BU, Hinckel B, Farr J, Yanke AB, Bugbee WD, Cole BJ. Osteochondral allograft transplantation in the patellofemoral

joint: a systematic review. *Am J Sports Med.* 2019 Oct;47(12):3009-18. Epub 2018 Dec 7.

3. Ding C, Cicuttini F, Scott F, Cooley H, Boon C, Jones G. Natural history of knee cartilage defects and factors affecting change. *Arch Intern Med.* 2006 Mar 27; 166(6):651-8.

4. Steadman JR, Rodkey WG, Rodrigo JJ. Microfracture: surgical technique and rehabilitation to treat chondral defects. *Clin Orthop Relat Res*. 2001 Oct;391(Suppl):S362-9.
5. Steadman JR, Briggs KK, Rodrigo JJ, Kocher MS, Gill TJ, Rodkey WG. Outcomes of microfracture for traumatic chondral defects of the knee: average 11-year follow-up. *Arthroscopy*. 2003 May-Jun;19(5):477-84.
6. Mithoefer K, Williams RJ 3rd, Warren RF, Potter HG, Spock CR, Jones EC, Wickiewicz TL, Marx RG. The microfracture technique for the treatment of articular cartilage lesions in the knee. A prospective cohort study. *J Bone Joint Surg Am*. 2005 Sep;87(9):1911-20.
7. Kreuz PC, Steinwachs MR, Erggelet C, Krause SJ, Konrad G, Uhl M, Südkamp N. Results after microfracture of full-thickness chondral defects in different compartments in the knee. *Osteoarthritis Cartilage*. 2006 Nov;14(11):1119-25. Epub 2006 Jul 11.
8. Nehr S, Spector M, Minas T. Histologic analysis of tissue after failed cartilage repair procedures. *Clin Orthop Relat Res*. 1999 Aug;365:149-62.
9. Orth P, Gao L, Madry H. Microfracture for cartilage repair in the knee: a systematic review of the contemporary literature. *Knee Surg Sports Traumatol Arthrosc*. 2020 Mar;28(3):670-706. Epub 2019 Jan 18.
10. Chen H, Hoemann CD, Sun J, Chevrier A, McKee MD, Shive MS, Hurtig M, Buschmann MD. Depth of subchondral perforation influences the outcome of bone marrow stimulation cartilage repair. *J Orthop Res*. 2011 Aug;29(8):1178-84. Epub 2011 Feb 24.
11. Eldracher M, Orth P, Cucchiari M, Pape D, Madry H. Small subchondral drill holes improve marrow stimulation of articular cartilage defects. *Am J Sports Med*. 2014 Nov;42(11):2741-50. Epub 2014 Aug 28.
12. Chen H, Sun J, Hoemann CD, Lascau-Coman V, Ouyang W, McKee MD, Shive MS, Buschmann MD. Drilling and microfracture lead to different bone structure and necrosis during bone-marrow stimulation for cartilage repair. *J Orthop Res*. 2009 Nov;27(11):1432-8.
13. Filardo G, Perdisa F, Roffi A, Marcacci M, Kon E. Stem cells in articular cartilage regeneration. *J Orthop Surg Res*. 2016 Apr 12;11:42.
14. Gobbi A, Karmatzikos G, Sankineani SR. One-step surgery with multipotent stem cells for the treatment of large full-thickness chondral defects of the knee. *Am J Sports Med*. 2014 Mar;42(3):648-57. Epub 2014 Jan 23.
15. Gigante A, Ceconi S, Calcagno S, Busilacchi A, Enea D. Arthroscopic knee cartilage repair with covered microfracture and bone marrow concentrate. *Arthrosc Tech*. 2012 Sep 14;1(2):e175-80.
16. Gigante A, Calcagno S, Ceconi S, Ramazzotti D, Manzotti S, Enea D. Use of collagen scaffold and autologous bone marrow concentrate as a one-step cartilage repair in the knee: histological results of second-look biopsies at 1 year follow-up. *Int J Immunopathol Pharmacol*. 2011 Jan-Mar;24(1)(Suppl 2):69-72.
17. Cadossi M, Buda RE, Ramponi L, Sambri A, Natali S, Giannini S. Bone marrow-derived cells and biophysical stimulation for talar osteochondral lesions: a randomized controlled study. *Foot Ankle Int*. 2014 Oct;35(10):981-7. Epub 2014 Jun 10.
18. Buda R, Castagnini F, Cavallo M, Ramponi L, Vannini F, Giannini S. "One-step" bone marrow-derived cells transplantation and joint debridement for osteochondral lesions of the talus in ankle osteoarthritis: clinical and radiological outcomes at 36 months. *Arch Orthop Trauma Surg*. 2016 Jan;136(1):107-16. Epub 2015 Oct 15.
19. Buda R, Vannini F, Cavallo M, Baldassarri M, Luciani D, Mazzotti A, Pungetti C, Olivieri A, Giannini S. One-step arthroscopic technique for the treatment of osteochondral lesions of the knee with bone-marrow-derived cells: three years results. *Musculoskelet Surg*. 2013 Aug;97(2):145-51. Epub 2013 Feb 19.
20. Buda R, Vannini F, Cavallo M, Baldassarri M, Natali S, Castagnini F, Giannini S. One-step bone marrow-derived cell transplantation in talar osteochondral lesions: mid-term results. *Joints*. 2014 Jan 8;1(3):102-7.
21. Buda R, Vannini F, Cavallo M, Grigolo B, Cenacchi A, Giannini S. Osteochondral lesions of the knee: a new one-step repair technique with bone-marrow-derived cells. *J Bone Joint Surg Am*. 2010 Dec;92(Suppl 2):2-11.
22. Buda R, Cavallo M, Castagnini F, Cenacchi A, Natali S, Vannini F, Giannini S. Treatment of hemophilic ankle arthropathy with one-step arthroscopic bone marrow-derived cells transplantation. *Cartilage*. 2015 Jul;6(3):150-5.
23. Giannini S, Buda R, Vannini F, Cavallo M, Grigolo B. One-step bone marrow-derived cell transplantation in talar osteochondral lesions. *Clin Orthop Relat Res*. 2009 Dec;467(12):3307-20. Epub 2009 May 16.
24. Giannini S, Buda R, Battaglia M, Cavallo M, Ruffilli A, Ramponi L, Pagliuzzi G, Vannini F. One-step repair in talar osteochondral lesions: 4-year clinical results and t2-mapping capability in outcome prediction. *Am J Sports Med*. 2013 Mar;41(3):511-8. Epub 2012 Dec 5.
25. Giannini S, Buda R, Cavallo M, Ruffilli A, Cenacchi A, Cavallo C, Vannini F. Cartilage repair evolution in post-traumatic osteochondral lesions of the talus: from open field autologous chondrocyte to bone-marrow-derived cells transplantation. *Injury*. 2010 Nov;41(11):1196-203. Epub 2010 Oct 8.
26. Gobbi A, Chaurasia S, Karmatzikos G, Nakamura N. Matrix-induced autologous chondrocyte implantation versus multipotent stem cells for the treatment of large patellofemoral chondral lesions: a nonrandomized prospective trial. *Cartilage*. 2015 Apr;6(2):82-97.
27. Saw KY, Anz A, Siew-Yoke Jee C, Merican S, Ching-Soong Ng R, Roohi SA, Ragavanaidu K. Articular cartilage regeneration with autologous peripheral blood stem cells versus hyaluronic acid: a randomized controlled trial. *Arthroscopy*. 2013 Apr;29(4):684-94. Epub 2013 Feb 4.
28. Saw KY, Anz A, Jee CS, Ng RC, Mohtarrudin N, Ragavanaidu K. High tibial osteotomy in combination with chondrogenesis after stem cell therapy: a histological report of 8 cases. *Arthroscopy*. 2015 Oct;31(10):1909-20. Epub 2015 May 23.
29. Saw KY, Anz A, Merican S, Tay YG, Ragavanaidu K, Jee CS, McGuire DA. Articular cartilage regeneration with autologous peripheral blood progenitor cells and hyaluronic acid after arthroscopic subchondral drilling: a report of 5 cases with histology. *Arthroscopy*. 2011 Apr;27(4):493-506. Epub 2011 Feb 19.
30. Saw KY, Hussin P, Loke SC, Azam M, Chen HC, Tay YG, Low S, Wallin KL, Ragavanaidu K. Articular cartilage regeneration with autologous marrow aspirate and hyaluronic acid: an experimental study in a goat model. *Arthroscopy*. 2009 Dec;25(12):1391-400. Epub 2009 Sep 17.
31. Turajane T, Chaweewannakorn U, Larbpaiboonpong V, Aojanepong J, Thitiset T, Honsawek S, Fongsarun J, Papadopoulos KI. Combination of intra-articular autologous activated peripheral blood stem cells with growth factor addition/ preservation and hyaluronic acid in conjunction with arthroscopic microdrilling mesenchymal cell stimulation improves quality of life and regenerates articular cartilage in early osteoarthritic knee disease. *J Med Assoc Thai*. 2013 May;96(5):580-8.
32. Fu WL, Ao YF, Ke XY, Zheng ZZ, Gong X, Jiang D, Yu JK. Repair of large full-thickness cartilage defect by activating endogenous peripheral blood stem cells and autologous periosteum flap transplantation combined with patellofemoral realignment. *Knee*. 2014 Mar;21(2):609-12. Epub 2013 Oct 28.
33. Cesselli D, Beltrami AP, Rigo S, Bergamin N, D'Aurizio F, Verardo R, Piazza S, Klaric E, Fanin R, Toffoletto B, Marzinotto S, Mariuzzi L, Finato N, Pandolfi M, Leri A, Schneider C, Beltrami CA, Anversa P. Multipotent progenitor cells are present in human peripheral blood. *Circ Res*. 2009 May 22;104(10):1225-34. Epub 2009 Apr 23.
34. Skowroński J, Skowroński R, Rutka M. Cartilage lesions of the knee treated with blood mesenchymal stem cells - results. *Ortop Traumatol Rehabil*. 2012 Nov-Dec;14(6):569-77.
35. Hölig K, Kramer M, Kroschinsky F, Bornhäuser M, Mengling T, Schmidt AH, Rutt C, Ehninger G. Safety and efficacy of hematopoietic stem cell collection from mobilized peripheral blood in unrelated volunteers: 12 years of single-center experience in 3928 donors. *Blood*. 2009 Oct 29;114(18):3757-63. Epub 2009 Aug 7.
36. Bartz RL, Karamic E, Noble PC, Lintner D, Bocell J. Topographic matching of selected donor and recipient sites for osteochondral autografting of the articular surface of the femoral condyles. *Am J Sports Med*. 2001 Mar-Apr;29(2):207-12.
37. Camp CL, Stuart MJ, Krych AJ. Current concepts of articular cartilage restoration techniques in the knee. *Sports Health*. 2014 May;6(3):265-73.
38. Figueroa D, Meleán P, Calvo R, Gili F, Zilleruelo N, Vaisman A. Osteochondral autografts in full thickness patella cartilage lesions. *Knee*. 2011 Aug;18(4):220-3. Epub 2010 Jul 14.
39. Donoso R, Figueroa D, Espinoza J, Yañez C, Saavedra J. Osteochondral autologous transplantation for treating patellar high-grade chondral defects: a systematic review. *Orthop J Sports Med*. 2019 Oct 17;7(10):2325967119876618.
40. Redondo ML, Beer AJ, Yanke AB. Cartilage restoration: microfracture and osteochondral autograft transplantation. *J Knee Surg*. 2018 Mar;31(3):231-8. Epub 2018 Feb 2.
41. Gowd AK, Cvetanovich GL, Liu JN, Christian DR, Cabarcas BC, Redondo ML, Verma NN, Yanke AB, Cole BJ. Management of chondral lesions of the knee: analysis of trends and short-term complications using the National Surgical Quality Improvement Program database. *Arthroscopy*. 2019 Jan;35(1):138-46. Epub 2018 Nov 22.
42. Hinckel BB, Pratte EL, Baumann CA, Gowd AK, Farr J, Liu JN, Yanke AB, Chahla J, Sherman SL. Patellofemoral cartilage restoration: a systematic review and meta-analysis of clinical outcomes. *Am J Sports Med*. 2020 Jun;48(7):1756-72. Epub 2020 Jan 3.
43. Riboh J, Cvetanovich GL, Cole BJ, Yanke AB. Comparative efficacy of cartilage repair procedures in the knee: a network meta-analysis. *Knee Surg Sports Traumatol Arthrosc*. 2017 Dec;25(12):3786-99. Epub 2016 Sep 7.
44. Jones KJ, Kelley BV, Arshi A, McAllister DR, Fabricant PD. Comparative effectiveness of cartilage repair with respect to the minimal clinically important difference. *Am J Sports Med*. 2019 Nov;47(13):3284-93. Epub 2019 May 13.
45. Solheim E, Hegna J, Strand T, Harlem T, Inderhaug E. Randomized study of long-term (15-17 years) outcome after microfracture versus mosaicplasty in knee articular cartilage defects. *Am J Sports Med*. 2018 Mar;46(4):826-31. Epub 2017 Dec 18.
46. Solheim E, Hegna J, Inderhaug E. Long-term survival after microfracture and mosaicplasty for knee articular cartilage repair: a comparative study between two treatments cohorts. *Cartilage*. 2020 Jan;11(1):71-6. Epub 2018 Jun 21.

47. Werner BC, Cosgrove CT, Gilmore CJ, Lyons ML, Miller MD, Brockmeier SF, Diduch DR. Accelerated return to sport after osteochondral autograft plug transfer. *Orthop J Sports Med.* 2017 Apr 20;5(4):2325967117702418.
48. Garretson RB 3rd, Katolik LI, Verma N, Beck PR, Bach BR, Cole BJ. Contact pressure at osteochondral donor sites in the patellofemoral joint. *Am J Sports Med.* 2004 Jun;32(4):967-74.
49. Anil U, Strauss EJ. Donor-site-related mechanical symptoms following osteochondral autograft transfer: a case report. *JBJS Case Connect.* 2018 Oct-Dec; 8(4):e84.
50. LaPrade RF, Botker JC. Donor-site morbidity after osteochondral autograft transfer procedures. *Arthroscopy.* 2004 Sep;20(7):e69-73.
51. Bexkens R, Ogink PT, Doornberg JN, Kerkhoffs GMMJ, Eygendaal D, Oh LS, van den Bekerom MPJ. Donor-site morbidity after osteochondral autologous transplantation for osteochondritis dissecans of the capitellum: a systematic review and meta-analysis. *Knee Surg Sports Traumatol Arthrosc.* 2017 Jul;25(7):2237-46. Epub 2017 Apr 8.
52. Matsuura T, Hashimoto Y, Kinoshita T, Nishino K, Nishida Y, Takigami J, Katsuda H, Shimada N. Donor site evaluation after osteochondral autograft transplantation for capitellar osteochondritis dissecans. *Am J Sports Med.* 2019 Oct;47(12):2836-43. Epub 2019 Sep 10.
53. Andrade R, Nunes J, Hinckel BB, Gruskay J, Vasta S, Bastos R, Oliveira JM, Reis RL, Gomoll AH, Espregueira-Mendes J. Cartilage restoration of patellofemoral lesions: a systematic review. *Cartilage.* 2019 Dec 17. [Epub ahead of print]
54. Cavendish PA, Everhart JS, Peters NJ, Sommerfeldt MF, Flanigan DC. Osteochondral allograft transplantation for knee cartilage and osteochondral defects: a review of indications, technique, rehabilitation, and outcomes. *JBJS Rev.* 2019 Jun; 7(6):e7.
55. Mestriner AB, Ackermann J, Gomoll AH. Patellofemoral cartilage repair. *Curr Rev Musculoskelet Med.* 2018 Jun;11(2):188-200.
56. Assenmacher AT, Pareek A, Reardon PJ, Macalena JA, Stuart MJ, Krych AJ. Long-term outcomes after osteochondral allograft: a systematic review at long-term follow-up of 12.3 years. *Arthroscopy.* 2016 Oct;32(10):2160-8. Epub 2016 Jun 15.
57. Cameron JL, Pulido PA, McCauley JC, Bugbee WD. Osteochondral allograft transplantation of the femoral trochlea. *Am J Sports Med.* 2016 Mar;44(3):633-8. Epub 2015 Dec 30.
58. De Caro F, Bisicchia S, Amendola A, Ding L. Large fresh osteochondral allografts of the knee: a systematic clinical and basic science review of the literature. *Arthroscopy.* 2015 Apr;31(4):757-65. Epub 2015 Feb 3.
59. Familiari F, Cinque ME, Chahla J, Godin JA, Olesen ML, Moatshe G, LaPrade RF. Clinical outcomes and failure rates of osteochondral allograft transplantation in the knee: a systematic review. *Am J Sports Med.* 2018 Dec;46(14):3541-9. Epub 2017 Oct 17.
60. Tirico LEP, McCauley JC, Pulido PA, Bugbee WD. Lesion size does not predict outcomes in fresh osteochondral allograft transplantation. *Am J Sports Med.* 2018 Mar;46(4):900-7. Epub 2018 Jan 23.
61. Tirico LEP, McCauley JC, Pulido PA, Demange MK, Bugbee WD. Is patient satisfaction associated with clinical outcomes after osteochondral allograft transplantation in the knee? *Am J Sports Med.* 2019 Jan;47(1):82-7. Epub 2018 Nov 27.
62. Davey A, Frank RM, Wang KC, Southworth TM, Cole BJ. Clinical outcomes of revision osteochondral allograft transplantation. *Arthroscopy.* 2019 Sep;35(9):2636-45.
63. Gracitelli GC, Meric G, Briggs DT, Pulido PA, McCauley JC, Belloti JC, Bugbee WD. Fresh osteochondral allografts in the knee: comparison of primary transplantation versus transplantation after failure of previous subchondral marrow stimulation. *Am J Sports Med.* 2015 Apr;43(4):885-91.
64. Riff AJ, Huddleston HP, Cole BJ, Yanke AB. Autologous chondrocyte implantation and osteochondral allograft transplantation render comparable outcomes in the setting of failed marrow stimulation. *Am J Sports Med.* 2020 Mar;48(4):861-70. Epub 2020 Feb 13.
65. Mistry H, Metcalfe A, Smith N, Loveman E, Colquitt J, Royle P, Waugh N. The cost-effectiveness of osteochondral allograft transplantation in the knee. *Knee Surg Sports Traumatol Arthrosc.* 2019 Jun;27(6):1739-53. Epub 2019 Feb 5.
66. Lamplot JD, Schafer KA, Matava MJ. Treatment of failed articular cartilage reconstructive procedures of the knee: a systematic review. *Orthop J Sports Med.* 2018 Mar 23;6(3):2325967118761871.
67. Gracitelli GC, Meric G, Pulido PA, Görtz S, De Young AJ, Bugbee WD. Fresh osteochondral allograft transplantation for isolated patellar cartilage injury. *Am J Sports Med.* 2015 Apr;43(4):879-84. Epub 2015 Jan 16.
68. Tirico LEP, McCauley JC, Pulido PA, Bugbee WD. Osteochondral allograft transplantation of the femoral condyle utilizing a thin plug graft technique. *Am J Sports Med.* 2019 Jun;47(7):1613-20. Epub 2019 May 17.
69. Wang D, Lin KM, Burge AJ, Balazs GC, Williams RJ 3rd. Bone marrow aspirate concentrate does not improve osseous integration of osteochondral allografts for the treatment of chondral defects in the knee at 6 and 12 months: a comparative magnetic resonance imaging analysis. *Am J Sports Med.* 2019 Feb;47(2):339-46. Epub 2018 Dec 13.
70. Brittberg M, Lindahl A, Nilsson A, Ohlsson C, Isaksson O, Peterson L. Treatment of deep cartilage defects in the knee with autologous chondrocyte transplantation. *N Engl J Med.* 1994 Oct 6;331(14):889-95.
71. Gooding CR, Bartlett W, Bentley G, Skinner JA, Carrington R, Flanagan A. A prospective, randomised study comparing two techniques of autologous chondrocyte implantation for osteochondral defects in the knee: periosteum covered versus type I/III collagen covered. *Knee.* 2006 Jun;13(3):203-10. Epub 2006 Apr 27.
72. Hinckel BB, Gomoll AH. Patellofemoral cartilage restoration: indications, techniques, and outcomes of autologous chondrocytes implantation, matrix-induced chondrocyte implantation, and particulated juvenile allograft cartilage. *J Knee Surg.* 2018 Mar;31(3):212-26. Epub 2017 Oct 16.
73. Zaslav K, Cole B, Brewster R, DeBerardino T, Farr J, Fowler P, Nissen C; STAR Study Principal Investigators. A prospective study of autologous chondrocyte implantation in patients with failed prior treatment for articular cartilage defect of the knee: results of the Study of the Treatment of Articular Repair (STAR) clinical trial. *Am J Sports Med.* 2009 Jan;37(1):42-55. Epub 2008 Oct 16.
74. Knutsen G, Drogset JO, Engebretsen L, Grøntvedt T, Isaksen V, Ludvigsen TC, Roberts S, Solheim E, Strand T, Johansen O. A randomized trial comparing autologous chondrocyte implantation with microfracture. Findings at five years. *J Bone Joint Surg Am.* 2007 Oct;89(10):2105-12.
75. Schuette HB, Kraeutler MJ, McCarty EC. Matrix-assisted autologous chondrocyte transplantation in the knee: a systematic review of mid- to long-term clinical outcomes. *Orthop J Sports Med.* 2017 Jun 6;5(6):2325967117709250.
76. Curl WW, Krome J, Gordon ES, Rushing J, Smith BP, Poehling GG. Cartilage injuries: a review of 31,516 knee arthroscopies. *Arthroscopy.* 1997 Aug;13(4):456-60.
77. Krych AJ, Pareek A, King AH, Johnson NR, Stuart MJ, Williams RJ 3rd. Return to sport after the surgical management of articular cartilage lesions in the knee: a meta-analysis. *Knee Surg Sports Traumatol Arthrosc.* 2017 Oct;25(10):3186-96. Epub 2016 Aug 18.
78. Peterson L, Minas T, Brittberg M, Nilsson A, Sjögren-Jansson E, Lindahl A. Two- to 9-year outcome after autologous chondrocyte transplantation of the knee. *Clin Orthop Relat Res.* 2000 May;374:212-34.
79. Steinwachs M. New technique for cell-seeded collagen-matrix-supported autologous chondrocyte transplantation. *Arthroscopy.* 2009 Feb;25(2):208-11. Epub 2008 Dec 18.
80. Ebert JR, Fallon M, Wood DJ, Janes GC. A prospective clinical and radiological evaluation at 5 years after arthroscopic matrix-induced autologous chondrocyte implantation. *Am J Sports Med.* 2017 Jan;45(1):59-69. Epub 2016 Oct 1.
81. Hinckel BB, Gomoll AH. Autologous chondrocytes and next-generation matrix-based autologous chondrocyte implantation. *Clin Sports Med.* 2017 Jul;36(3):525-48.
82. Kon E, Filardo G, Di Martino A, Marcacci M. ACI and MACI. *J Knee Surg.* 2012 Mar;25(1):17-22.
83. Schubert T, Anders S, Neumann E, Schölmerich J, Hofstädter F, Grifka J, Müller-Ladner U, Libera J, Schedel J. Long-term effects of chondrospheres on cartilage lesions in an autologous chondrocyte implantation model as investigated in the SCID mouse model. *Int J Mol Med.* 2009 Apr;23(4):455-60.
84. Müller PE, Gallik D, Hammerschmid F, Baur-Melnyk A, Pietschmann MF, Zhang A, Niethammer TR. Third-generation autologous chondrocyte implantation after failed bone marrow stimulation leads to inferior clinical results. *Knee Surg Sports Traumatol Arthrosc.* 2020 Feb;28(2):470-7. Epub 2019 Aug 12.
85. Jungmann PM, Salzmann GM, Schmal H, Pestka JM, Südkamp NP, Niemeyer P. Autologous chondrocyte implantation for treatment of cartilage defects of the knee: what predicts the need for reintervention? *Am J Sports Med.* 2012 Jan;40(1):58-67. Epub 2011 Oct 3.
86. Minas T, Von Keudell A, Bryant T, Gomoll AH. The John Insall Award: a minimum 10-year outcome study of autologous chondrocyte implantation. *Clin Orthop Relat Res.* 2014 Jan;472(1):41-51.
87. Pestka JM, Bode G, Salzmann G, Südkamp NP, Niemeyer P. Clinical outcome of autologous chondrocyte implantation for failed microfracture treatment of full-thickness cartilage defects of the knee joint. *Am J Sports Med.* 2012 Feb;40(2):325-31. Epub 2011 Nov 5.
88. Knutsen G, Engebretsen L, Ludvigsen TC, Drogset JO, Grøntvedt T, Solheim E, Strand T, Roberts S, Isaksen V, Johansen O. Autologous chondrocyte implantation compared with microfracture in the knee. A randomized trial. *J Bone Joint Surg Am.* 2004 Mar;86(3):455-64.
89. Van Assche D, Staes F, Van Caspel D, Vanlauwe J, Bellemans J, Saris DB, Luyten FP. Autologous chondrocyte implantation versus microfracture for knee cartilage injury: a prospective randomized trial, with 2-year follow-up. *Knee Surg Sports Traumatol Arthrosc.* 2010 Apr;18(4):486-95. Epub 2009 Oct 10.
90. Bonasia DE, Martin JA, Marmotti A, Amendola RL, Buckwalter JA, Rossi R, Blonna D, Adkisson HD 4th, Amendola A. Cocultures of adult and juvenile chondrocytes compared with adult and juvenile chondral fragments: in vitro matrix production. *Am J Sports Med.* 2011 Nov;39(11):2355-61. Epub 2011 Aug 9.
91. Tompkins M, Hamann JC, Diduch DR, Bonner KF, Hart JM, Gwathmey FW, Milewski MD, Gaskin CM. Preliminary results of a novel single-stage cartilage

- restoration technique: particulated juvenile articular cartilage allograft for chondral defects of the patella. *Arthroscopy*. 2013 Oct;29(10):1661-70. Epub 2013 Jul 20.
- 92.** Buckwalter JA, Bowman GN, Albright JP, Wolf BR, Bollier M. Clinical outcomes of patellar chondral lesions treated with juvenile particulated cartilage allografts. *Iowa Orthop J*. 2014;34:44-9.
- 93.** Farr J, Tabet SK, Margerrison E, Cole BJ. Clinical, radiographic, and histological outcomes after cartilage repair with particulated juvenile articular cartilage: a 2-year prospective study. *Am J Sports Med*. 2014 Jun;42(6):1417-25. Epub 2014 Apr 9.
- 94.** Grawe B, Burge A, Nguyen J, Strickland S, Warren R, Rodeo S, Stein BS. Cartilage regeneration in full-thickness patellar chondral defects treated with particulated juvenile articular allograft cartilage: an MRI analysis. *Cartilage*. 2017 Oct;8(4):374-83.
- 95.** Wang T, Belkin NS, Burge AJ, Chang B, Pais M, Mahony G, Williams RJ. Patellofemoral cartilage lesions treated with particulated juvenile allograft cartilage: a prospective study with minimum 2-year clinical and magnetic resonance imaging outcomes. *Arthroscopy*. 2018 May;34(5):1498-505. Epub 2018 Feb 1.
- 96.** Abrams GD, Mall NA, Fortier LA, Roller BL, Cole BJ. BioCartilage: background and operative technique. *Oper Tech Sports Med*. 2013 Jun;21(2):116-24.
- 97.** Fortier LA, Chapman HS, Pownder SL, Roller BL, Cross JA, Cook JL, Cole BJ. BioCartilage improves cartilage repair compared with microfracture alone in an equine model of full-thickness cartilage loss. *Am J Sports Med*. 2016 Sep;44(9):2366-74. Epub 2016 Jun 13.
- 98.** Vangsness CT Jr, Higgs G, Hoffman JK, Farr J, Davidson PA, Milstein F, Geraghty S. Implantation of a novel cryopreserved viable osteochondral allograft for articular cartilage repair in the knee. *J Knee Surg*. 2018 Jul;31(6):528-35. Epub 2017 Jul 24.
- 99.** Geraghty S, Kuang JQ, Yoo D, LeRoux-Williams M, Vangsness CT Jr, Danilkovitch A. A novel, cryopreserved, viable osteochondral allograft designed to augment marrow stimulation for articular cartilage repair. *J Orthop Surg Res*. 2015 May 14;10:66.
- 100.** Hoffman JK, Geraghty S, Protzman NM. Articular cartilage repair using marrow stimulation augmented with a viable chondral allograft: 9-month postoperative histological evaluation. *Case Rep Orthop*. 2015;2015:617365. Epub 2015 Jan 1.
- 101.** Hirahara AM, Mueller KW Jr. BioCartilage: a new biomaterial to treat chondral lesions. *Sports Med Arthrosc Rev*. 2015 Sep;23(3):143-8.
- 102.** Woodmass JM, Melugin HP, Wu IT, Saris DBF, Stuart MJ, Krych AJ. Viable osteochondral allograft for the treatment of a full-thickness cartilage defect of the patella. *Arthrosc Tech*. 2017 Sep 25;6(5):e1661-5.
- 103.** Redondo ML, Naveen NB, Liu JN, Tauro TM, Southworth TM, Cole BJ. Preservation of knee articular cartilage. *Sports Med Arthrosc Rev*. 2018 Dec;26(4):e23-30.
- 104.** Cole BJ, Pascual-Garrido C, Grumet RC. Surgical management of articular cartilage defects in the knee. *J Bone Joint Surg Am*. 2009 Jul;91(7):1778-90.
- 105.** Brittberg M, Recker D, Ilgenfritz J, Saris DBF, SUMMIT Extension Study Group. Matrix-applied characterized autologous cultured chondrocytes versus microfracture: five-year follow-up of a prospective randomized trial. *Am J Sports Med*. 2018 May;46(6):1343-51.
- 106.** Knutsen G, Drogset JO, Engebretsen L, Grøntvedt G, Ludvigsen TC, Løken S, Solheim E, Strand T, Johansen O. A randomized multicenter trial comparing autologous chondrocyte implantation with microfracture: long-term follow-up at 14 to 15 years. *J Bone Joint Surg Am*. 2016 Aug 17;98(16):1332-9.
- 107.** Dasar U, Gursoy S, Akkaya M, Algin O, Isik C, Bozkurt M. Microfracture technique versus carbon fibre rod implantation for treatment of knee articular cartilage lesions. *J Orthop Surg (Hong Kong)*. 2016 Aug;24(2):188-93.
- 108.** Mithoefer K, Venugopal V, Manaqibwala M. Incidence, degree, and clinical effect of subchondral bone overgrowth after microfracture in the knee. *Am J Sports Med*. 2016 Aug;44(4):2057-63.
- 109.** Solheim E, Hegna J, Inderhaug E. Long-term clinical follow-up of microfracture versus mosaicplasty in articular cartilage defects of medial femoral condyle. *Knee*. 2017 Dec;24(6):1402-7.
- 110.** Solheim E, Hegna J, Inderhaug E, Øyen J, Harlem T, Strand T. Results at 10-14 years after microfracture treatment of articular cartilage defects in the knee. *Knee Surg Sports Traumatol Arthrosc*. 2016 May;24(5):1587-93.
- 111.** Steadman JR, Briggs KK, Matheny LM, Guillet A, Hanson CM, Willimon SC. Outcomes following microfracture of full-thickness articular cartilage lesions of the knee in adolescent patients. *J Knee Surg*. 2015 Apr;28(2):145-50.
- 112.** Wright JG. Revised grades of recommendation for summaries or reviews of orthopaedic surgical studies. *J Bone Joint Surg Am*. 2006 May;88(5):1161-2.
- 113.** Wang T, Wang DX, Burge AJ, Pais M, Kushwaha B, Rodeo SA, Williams RJ. Clinical and MRI outcomes of fresh osteochondral allograft transplantation after failed cartilage repair surgery in the knee. *J Bone Joint Surg Am*. 2018 Nov 21;100(22):1949-59.
- 114.** Hoburg A, Løer I, Körsmeier K, Siebold R, Niemeier P, Fickert S, Ruhnau K. Matrix-associated autologous chondrocyte implantation is an effective treatment at midterm follow-up in adolescents and young adults. *Orthop J Sports Med*. 2019 Apr 25;7(4):2325967119841077.
- 115.** Gille J, Behrens P, Schulz AP, Oheim R, Kienast B. Matrix-associated autologous chondrocyte implantation: a clinical follow-up at 15 years. *Cartilage*. 2016;7(4):309-15.
- 116.** Kon E, Filardo G, Gobbi A, Berruto M, Andriolo L, Ferrua P, Crespiatico I, Marcacci M. Long-term results after hyaluronan-based MACT for the treatment of cartilage lesions of the patellofemoral joint. *Am J Sports Med*. 2016 Mar;44(3):602-8.
- 117.** Riboh JC, Cole BJ, Farr J. Particulated articular cartilage for symptomatic chondral defects of the knee. *Curr Rev Musculoskelet Med*. 2015 Dec;8(4):429-35.
- 118.** Farr J, Cole BJ, Sherman S, Karas V. Particulated articular cartilage: CAIS and DeNovo NT. *J Knee Surg*. 2012 Mar;25(1):23-9.
- 119.** Cole BJ, Farr J, Winalski CS, Hosea T, Richmond J, Mandelbaum B, De Deyne PG. Outcomes after a single-stage procedure for cell-based cartilage repair: a prospective clinical safety trial with 2-year follow-up. *Am J Sports Med*. 2011 Jun;39(6):1170-9.
- 120.** Wixted CM, Dekker TJ, Adams SB. Particulated juvenile articular cartilage allograft transplantation for osteochondral lesions of the knee and ankle. *Expert Rev Med Devices*. 2020 Mar;17(3):235-44.